



MIGHTY EARTH



RAPID RESPONSE

Soy & Cattle Report

Report 13
June 2020



Prepared with

aidenvironment
Waxman

Executive Summary

This Rapid Response report highlights 11 cases of deforestation within 7 municipalities in the Cerrado biome and 3 municipalities in the Amazon biome. Eight of the selected cases are in the Cerrado biome and three are in the Amazon biome. The cases in this report covered clearance of a total of 13,103 ha of native vegetation (1,061 ha in the Amazon biome and 12,042 ha in the Cerrado biome.)

The 11 cases of clearing of native vegetation presented in this report were based on alerts data from DETER (System for Monitoring Deforestation on Real Time) and PRODES (Program for Deforestation Calculation) observed between March 29, 2020 and April 21, 2020. Land clearing alerts considered in this report were visually confirmed.

Cases and clearance (ha) per municipality

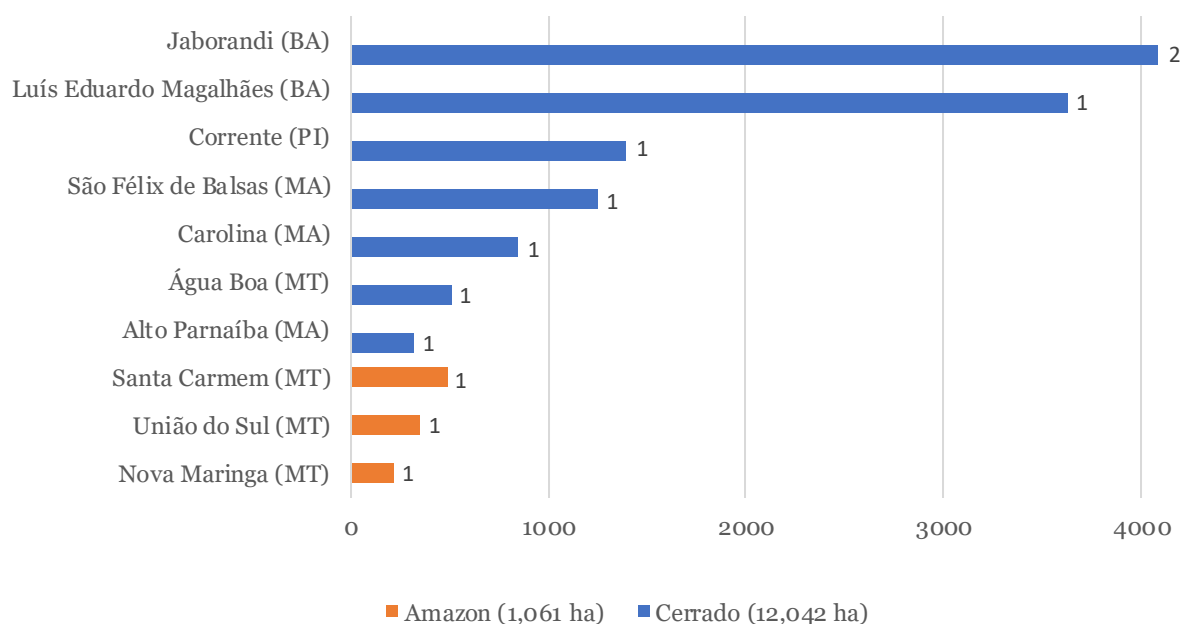


Table of Contents

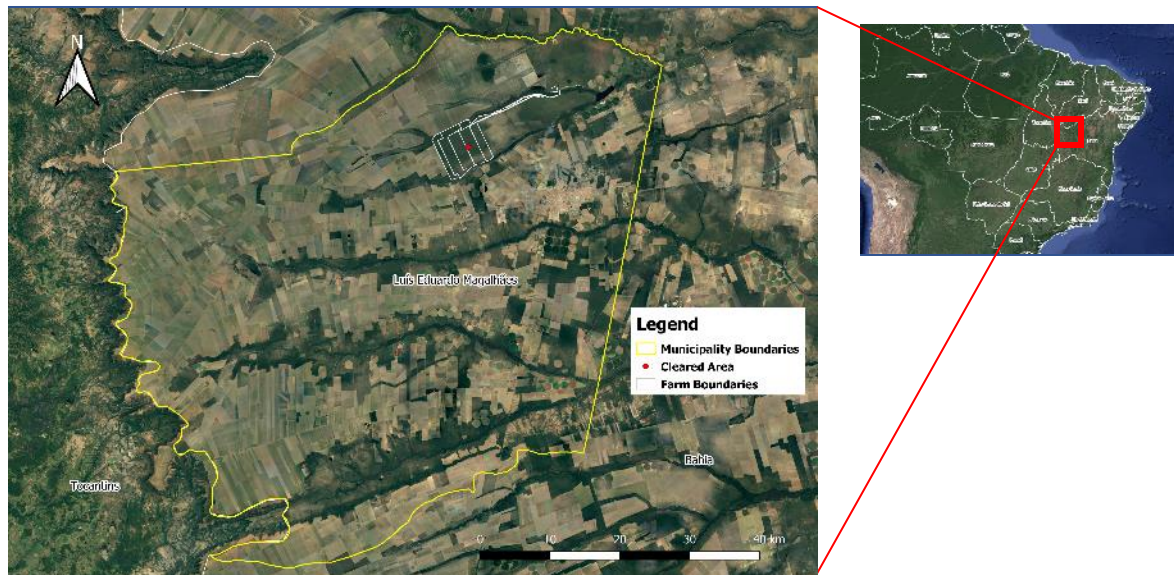
Cerrado biome

1.	Fazenda Bananal VIII - Parcela 2 (Luís Eduardo Magalhães - BA)	4
2.	Fazenda Esplendor & Fazenda Novo México (Jaborandi - BA)	7
3.	Fazenda Chapada I (Corrente - PI)	10
4.	Fazenda Brejão (São Félix das Balsas - MA)	13
5.	Fazenda Serrinha (Fazenda Horizonte) (Carolina - MA)	15
6.	Fazenda Porangaba (Água Boa - MT)	18
7.	Fazenda Butiatuvinha e Outra (Jaborandi - BA)	20
8.	Fazenda Tabatinga (Alto Parnaíba - MA)	23

Amazon biome

9.	Fazenda Soledade (Santa Carmem - MT)	25
10.	Fazenda Renascer (União do Sul - MT)	28
11.	Cunhataí VII (Nova Maringá - MT)	30

Property Location



Yellow border – boundary of Luís Eduardo Magalhães (Bahia) / White border – boundary of Fazenda Bananal VIII – Parcela 2 / Red dot – location of cleared area

Alert Imagery (before and after clearance)

05 March 2020



Source: European Union, contains modified Copernicus Sentinel data 2019, processed with EO Browser

29 May 2020



Source: European Union, contains modified Copernicus Sentinel data 2019, processed with EO Browser

1. Fazenda Bananal VIII - Parcela 2

(Luís Eduardo Magalhães - BA)

General Information		
Property; Registry; CAR	Fazenda Bananal VIII - Parcela 2	9510058396479
	CAR	13 different CAR declarations
Size (ha); Coordinates	45,338	-12.00866, -45.87133
Land Clearance		
Period of clearing	05 Mar to 29 May 2020	
Size (ha); Coordinates	3,634	-12.02118, -45.91736
Inside Forest Code protected areas	No	-
Type of vegetation	Savanna Park	
Legal Status		
Embargoes	No	-
Environmental fines	No	-
Natural Reserves	Yes	Área de Proteção Ambiental Bacia do Rio de Janeiro
Indigenous Lands	No	-
Priority for biodiversity conservation	Extremely high	
Ownership		
Company group	Agrifirma Brasil Agropecuária/Genagro	
Other linked properties	Total area owned by Agrifirma/Genagro is 71,297 ha: Fazenda Bananal (23,952 ha), Fazenda Arrojadinho (20,148 ha), and Fazenda Rio do Meio (12,287 ha.) Another property also called Fazenda Bananal (14,910 ha) is leased from Radar (Cosan/TIAA-Cref.) The Bananal farm cluster includes Fazenda Bananal I, II, IX and X, Fazenda Rio Bonito I, II and III and Fazenda Vale Forte I, II, III, IV, V and VI	
Supply Chain		
Main commodity	Soy	
Confirmed supply chain relation	Yes	
Soy	Main exporters (municipality)	Cofco (37%), ADM (25%), Bunge (24%), Amaggi (7%), Cargill (2%), others (5%)
	Warehouses within 50 km radius	141 warehouses e.g.: 15 owned by Bunge (1,384,948 MT), 5 owned by Cargill (918,217 MT)
	Supply chain details	Fazenda Bananal VIII - Parcela 2 supplied soy to Cargill and CCAB Agro in 2019
Beef	Main exporters (municipality)	JBS (52%), Minerva (17%), Marfrig (14%), others (17%)
	Slaughterhouses sourcing from municipality	28 different beef processors sourced cattle from Luís Eduardo Magalhães in 2017, e.g.: 1 owned by JBS (Itapetinga - BA)
	Supply chain details	-
Other supply chain details	-	

Fazenda Bananal VIII - Parcela 2, registered by Agrifirma Brasil (1), showed 3,550 ha of deforestation between 15 January and 24 May, 2020. Moreover, the cluster of adjacent Bananal farms under the same ownership showed a total of 5,690 ha of deforestation since January 2020, including Fazenda Bananal X and Parcela 3. In addition, Rapid Response reported 1,155 ha of deforestation in the linked property Fazenda Bananal IX in June 2019 within the conservation area APA Bacia do Rio de Janeiro, on top of 1,632 ha cleared on that same farm in the first quarter of 2019 (2). Agrifirma is a joint venture between Brasil Agronegócio FIP (3), a private equity fund managed by BRZ Investimentos, and Genagro, based in London (4). Brasil Agronegócio FIP invested BRL 160 million into Agrifirma (5). In 1 Q20, BrasilAgro, a publicly-traded farmland investor and soy producer with clients including Cargill, Amaggi, and Bunge, finalized its merger with farmland investor Agrifirma Brasil Agropecuária (6) and consolidated Agrifirma's land portfolio in its asset base (7). While this merger did not seem to include the Bananal farms, BrasilAgro already started buying Bananal farm(s) from Agrifirma in 2019. Agrifirma started to sell parcels of Fazenda Bananal in March 2019, including properties Bananal X and IX. Bananal IX, with 10,590 hectares, appears in a BrasilAgro report as an asset under sale (8). Cargill stated in response to an earlier Rapid Response report that it purchased soy from a farmer who leases one area on Fazenda Bananal property (9). This is likely Radoll Agropecuária (10, 11) who supplied soy from Fazenda Bananal - Parcela 2 to Cargill and CCAB Agro in the 2018/2019 harvest season (12).

(1) <http://www.seia.ba.gov.br/mapas/interativos>

(2) http://www.mightyearth.org/wp-content/uploads/Rapid-Response_Soy-and-Cattle_Special-Report_Fires_Sept-2019.pdf

(3) <https://valor.globo.com/empresas/noticia/2011/09/06/mesmo-com-captacao-agrifirma-m-antem-planos-de-ipo.ghtml>

(4) <http://www.genagro.net/index.html>

(5) http://www.mightyearth.org/wp-content/uploads/Rapid-Response_Soy-and-Cattle_Report-6.pdf

(6) <https://br.investing.com/news/stock-market-news/brasilagro-tem-ganhos-apos-concluir-a-incorporacao-da-agrifirma-brasil-716695>

(7) <https://chainreactionresearch.com/the-chain-brasilagros-string-of-new-farmland-acquisitions-signal-ongoing-land-speculation/>

(8) http://www.brasil-agro.com/brasilagro2011/web/download_arquivos.asp?id_arquivo=E9CD08F4-7273-407E-8591-0C58F1CE30DF

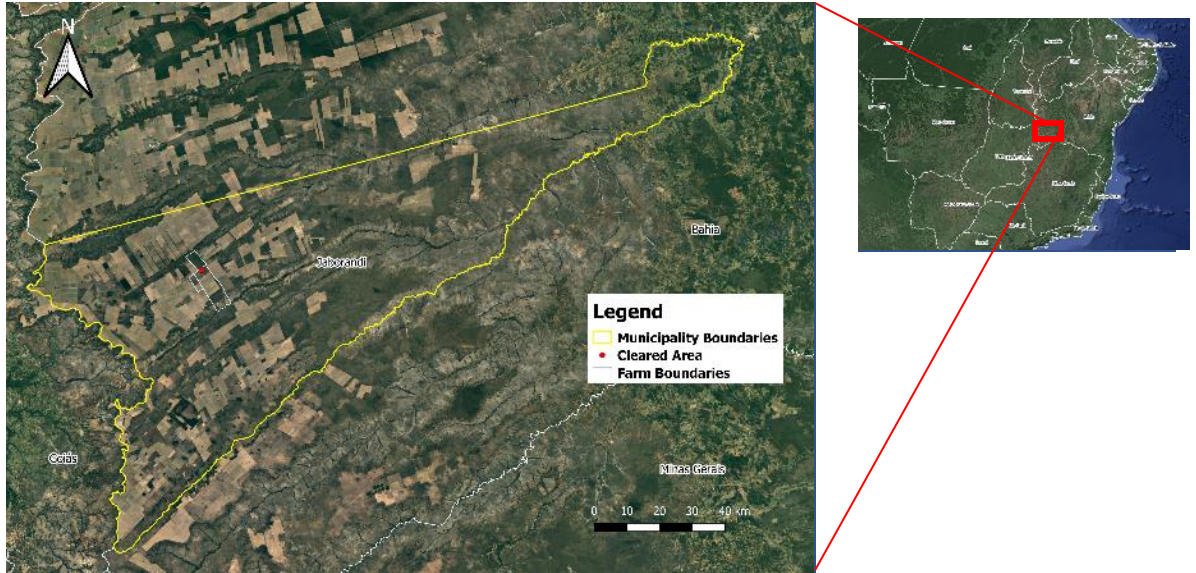
(9) http://www.mightyearth.org/wp-content/uploads/Rapid-Response_Soy-and-Cattle_Special-Report_Fires_Sept-2019.pdf

(10) <https://www.jusbrasil.com.br/diarios/293345670/djsp-judicial-1-a-instancia-capital-15-04-2020-pg-649?ref=serp>

(11) <https://www.jusbrasil.com.br/processos/219356044/processo-n-8002293-8220188050154-do-tjba>

(12) <http://www.tjsp.jus.br> (documents “doc_72230603.pdf” / “doc_74407233.pdf” / “doc_73391938.pdf”)

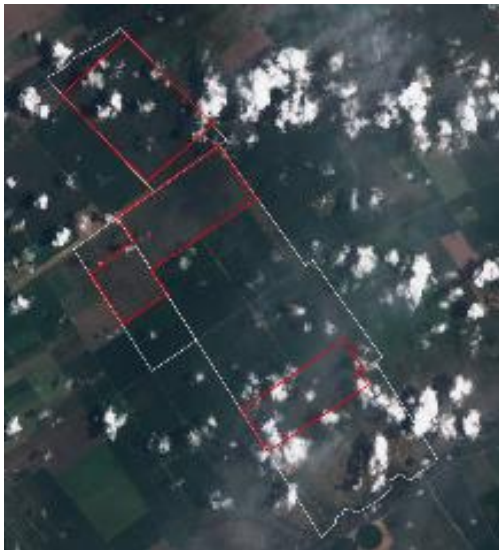
Property Location



Yellow border – boundary of Jaborandi (Bahia) / White border – boundary of Fazenda Esplendor & Fazenda Novo México / Red dot – location of cleared area

Alert Imagery (before and after clearance)

14 February 2020



Source: European Union, contains modified Copernicus Sentinel data 2019, processed with EO Browser

29 May 2020



Source: European Union, contains modified Copernicus Sentinel data 2019, processed with EO Browser

2. Fazenda Esplendor & Fazenda Novo México (Jaborandi - BA)

General Information			
Property; Registry; CAR declaration	Fazenda Esplendor & Fazenda Novo México		517306967 and 510644085
	CAR	18 different CAR declarations	
Size (ha); Coordinates	1,816 and 7,898	-14.02360, -45.78459 and -14.10017, -45.73791	
Land Clearance			
Period of clearing	14 Feb to 29 May 2020		
Size (ha); Coordinates	3,737	-14.04945, -45.76888	
Inside Forest Code protected areas	No	-	-
Type of vegetation	Forested Savanna		
Legal Status			
Embargoes	Yes	1 embargo for illegal clearance of 294 ha of native vegetation in 2006 (lifted in 2019)	
Environmental fines	Yes	1 fine for producing in an embargoed area inside Fazenda Novo México in 2014	BRL 10,000
Natural Reserves	No	-	
Indigenous Lands	No	-	
Priority for biodiversity conservation	Extremely high		
Ownership			
Company group	Calyx Agro (recently incorporated Coruja Agrícola)/LDC		
Other linked properties	4 other properties, totaling 8,763 ha. In Correntina (BA): Fazenda Santana e Outras / Fazenda Armazém Amaggi LDC (20 ha); Fazenda Santana (1,975 ha); Fazenda Santana I (3,585 ha); Fazenda Santana II (3,183 ha)		
Supply Chain			
Main commodity	Multiple		
Confirmed supply chain relation	Yes		
Soy	Main exporters (municipality)	Bunge (6%) [<i>Domestic Consumption (94%)</i>]	
	Warehouses within 50 km radius	9 warehouses e.g.: 1 owned by Cristina Maria Lamers (290,000 MT), 2 owned by Multigrain (55,948 MT)	
	Supply chain details	-	
Beef	Main exporters (municipality)	JBS (80%), Frigosol Frigorífico Sul Bahia (20%)	
	Slaughterhouses sourcing from municipality	29 different beef processors sourced cattle from Jaborandi in 2017, e.g.: 1 owned by JBS (Itapetinga - BA)	
	Supply chain details	-	
Other supply chain details	-		

Calyx Agro, owner of the two farms - Fazenda Esplendor and Fazenda Novo México - is the subsidiary/land investment fund of LDC in Latin America (1, 2). The subsidiary has received financial loans up to USD 60 to 70 million from financial giants the American International Group and KPS Capital Partners (2). In 2011, the World Bank considered a loan of USD 30 million to help Calyx Agro expand its operations in Latin America (3). Calyx Agro is operated from Louis Dreyfus' office in São Paulo and is run by two offshore companies based in the Cayman Islands in the office of M&C Corporate Services Limited (4, 5). The CEO of Calyx Agro Brasil Henrique Donati Snitcovski is the current president of the National Association of Cotton Exporters (ANEA) and is the head of the cotton platform in LDC (6). Calyx Agro incorporated Coruja Agrícola in January 2019 (7), who already owned and operated Fazenda Armazém Amaggi LDC in Correntina-BA (8). To date, Calyx Agro cultivates soy and corn in Fazenda Novo México (9). In 2019, the company received a permit granted by the environmental agency of Bahia, allowing the deforestation of 4,200 hectares in Fazenda Novo México (10).

(1) <https://www ldc.com/press-releases/louis-dreyfus-company-announces-change-in-senior-leadership/>

(2) Isakson, R. (Ed.). (2017). *New Directions in Agrarian Political Economy: Global Agrarian Transformations* (Vol. 1). Routledge.

(3) <https://www farmlandgrab.org/post/view/18886-world-bank-told-to-stop-lending-to-land-grabbers-like-calyx-agro>

(4) <https://economia.estadao.com.br/fatos-relevantes/pdf/20019975.pdf>

(5) <https://offshoreleaks.icij.org/nodes/120013788>

(6) <http://www.congressoalgodao.com.br/palestrantes/25>

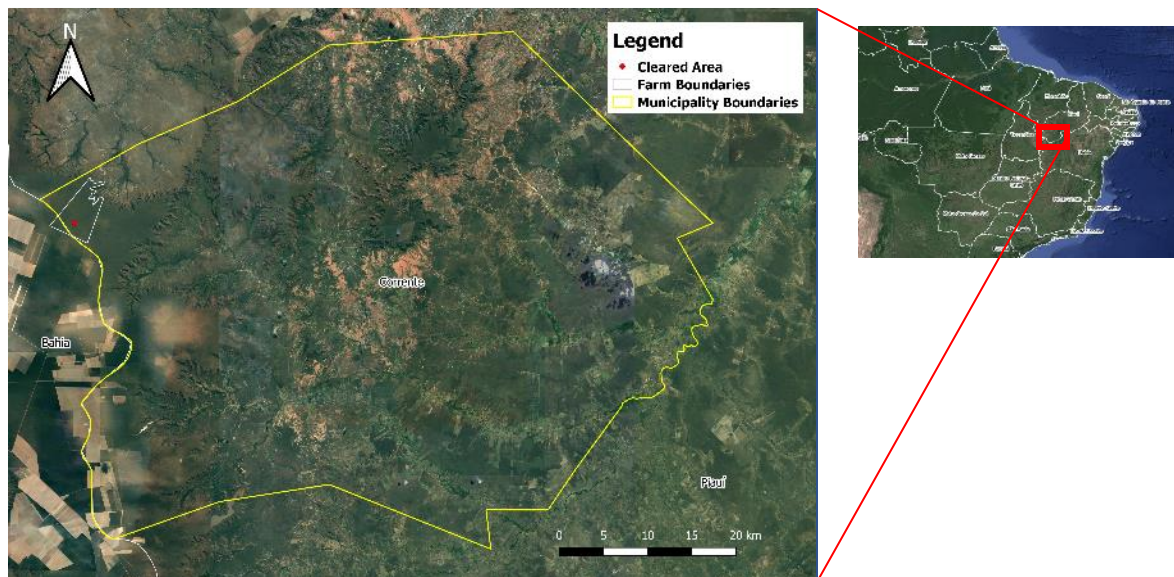
(7) <https://www.jusbrasil.com.br/diarios/224695664/dosp-jucesp-22-01-2019-pg-44>

(8) <https://sigef.incra.gov.br/geo/parcela/detalhe/e7bcc12-3124-483f-bb68-770481c6493a/>

(9) <https://www.linkedin.com/in/dayves-duarte-ferreira-08a3278b/>

(10) <https://www.escavador.com/diarios/807991/DOEBA/executivo/2019-02-23?page=24>

Property Location



Yellow border – boundary of Corrente (Piauí) / White border – boundary of Fazenda Chapada I / Red dot – location of cleared area

Alert Imagery (before and after clearance)

11 December 2019



Source: European Union, contains modified Copernicus Sentinel data 2019, processed with EO Browser

24 May 2020



Source: European Union, contains modified Copernicus Sentinel data 2019, processed with EO Browser

3. Fazenda Chapada I (Corrente - PI)

General Information		
Property; Registry; CAR declaration	Fazenda Chapada I	9500688454501
	CAR	PI-2202901-4721A94C22C944F486632C77D209791D
Size (ha); Coordinates	2,132	-10.31517, -45.44903
Land Clearance		
Period of clearing	11 Dec 2019 to 24 May 2020	
Size (ha); Coordinates	1,389	-10.32475, -45.45455
Inside Forest Code protected areas	Yes	317 ha inside declared Legal Reserve
Type of vegetation	Wooded Savanna	
Legal Status		
Embargoes	No	-
Environmental fines	Yes	not identified BRL 392,700
Natural Reserves	Yes	Parque Nacional das Nascentes de Rio Parnaíba
Indigenous Lands	No	-
Priority for biodiversity conservation	No	
Ownership		
Company group	WR Agroindústria, registered in Mulungu (PB)	
Other linked properties	8 other properties, totaling at least 4,780 ha. In Formosa do Rio Preto (BA): Fazenda Bom Jardim I (468 ha); Fazenda Bom Jardim III (450 ha); Fazenda Bom Jardim IV (431 ha); Fazenda Triângulo I (2,160 ha); Fazenda Triângulo II (331 ha). In Santa Rita de Cássia (BA): Fazenda Bom Jardim II (450 ha). In Mansidão (BA): Fazenda Bom Jardim I / Parte 1 (500 ha). In Mulungu (PB): Fazenda Bonança (unknown area)	
Supply Chain		
Main commodity	Multiple	
Confirmed supply chain relation	No	
Soy	Main exporters (municipality)	ADM (56%), Gavilon (17%), others (8%) [<i>Domestic Consumption (19%)</i>]
	Warehouses within 50 km radius	11 warehouses e.g.: 1 owned by Eleanor Rothemann (909,000 MT), 1 owned by Amaggi (50,000 MT), 1 owned by Bunge (50,000 MT), 1 owned by Cargill (50,000 MT)
	Supply chain details	-
Beef	Main exporters (municipality)	-
	Slaughterhouses sourcing from municipality	-
	Supply chain details	-
Other supply chain details	-	

The owner of the farm under alert, Adenir Jonatan Weisheimer, a rural businessman and agricultural technician, produces soy, cotton, corn, and beans. From 2008 to 2014, he was president of the Association of Rural Producers of Chapada das Mangabeiras (Aprochama), with operations in four states in Brazil (1). He co-owns WR Agroindústria, registered in Paraíba state, which is involved in seed production and in the production of grains including soy and corn (2, 3). One of the farms alleged to be part of WR Agroindústria's properties portfolio is registered under Bonança Agroindustrial, a company that went bankrupt (4). In 2008, Weisheimer was fined in BRL 392,700 for setting fire on 1,309 ha of Cerrado vegetation at his Fazenda Bom Jardim in Formosa do Rio Preto (BA)- a neighboring municipality of Corrente (PI) (5). In 2016, a neighboring farm owned by Weisheimer, Fazenda São José, had its registry revoked by a local estate registry office (6). In 2004, Bunge filed a lawsuit against Weisheimer and others. The lawsuit was about the payment of debts linked to Cedula de Crédito Rural, likely related to advance payments made to the supplier from the company (7).

(1) <http://www.al.pb.leg.br/23444/assembleia-concede-cidadania-ao-empresario-adenir-jonatan-weisheimer.html> (2) <http://www.sintegra.gov.br/>

(3) <https://cnpj.rocksp.com.br/cnpj/11488104000103/wr-agroindustria-ltda.html>

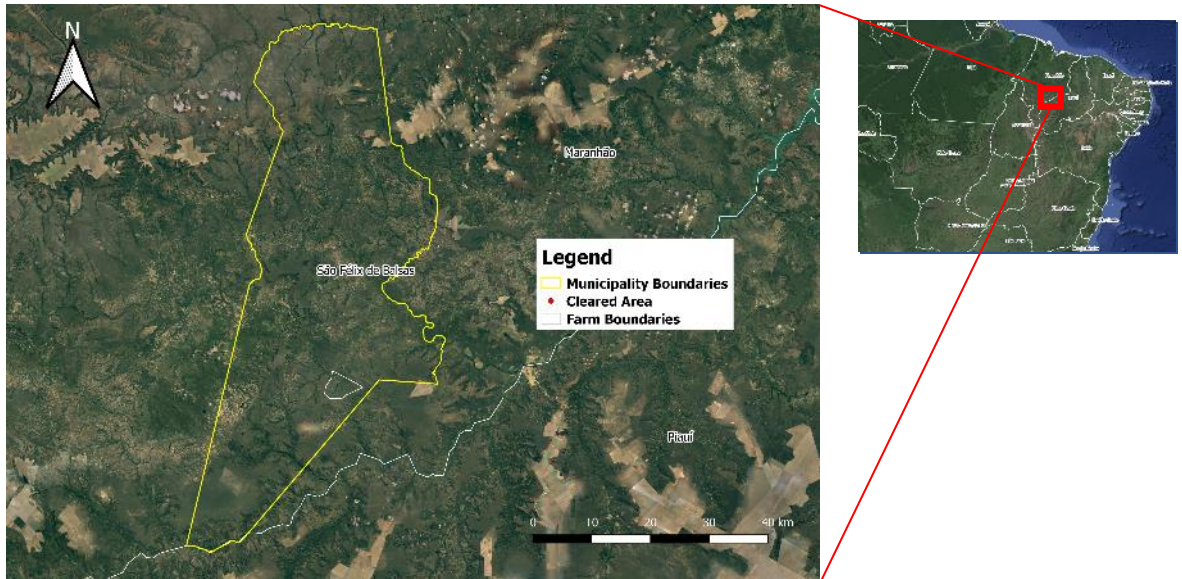
(4) <https://www.solutudo.com.br/pb/mulungu/mudas-e-eucaliptos/wr-agroindustria-17198177>

(5) <http://dadosabertos.ibama.gov.br/dataset/autos-de-infracao>

(6) <https://www.jusbrasil.com.br/diarios/247333731/djba-caderno4-17-06-2019-pg-542>

(7) <https://www.jusbrasil.com.br/processos/88072246/processo-n-0004123-8420048240025-do-tjsc>

Property Location



Yellow border – boundary of São Félix das Balsas (Maranhão) / White border – boundary of Fazenda Brejão / Red dot – location of cleared area

Alert Imagery (before and after clearance)

30 January 2020



Source: European Union, contains modified Copernicus Sentinel data 2019, processed with EO Browser

29 May 2020



Source: European Union, contains modified Copernicus Sentinel data 2019, processed with EO Browser

4. Fazenda Brejão (São Félix das Balsas - MA)

General Information		
Property; Registry; CAR declaration	Fazenda Brejão	9501900777711
	CAR	MA-2110807-351FFC1F36BA4B47BF5EF85A7E8B5309
Size (ha); Coordinates	1,707	-7.25934, -44.84758
Land Clearance		
Period of clearing	30 Jan to 29 May 2020	
Size (ha); Coordinates	1,253	-7.26570, -44.84646
Inside Forest Code protected areas	Yes	411 ha inside declared Legal Reserve and APP
Type of vegetation	Forested Savanna	
Legal Status		
Embargoes	No	-
Environmental fines	No	-
Natural Reserves	No	-
Indigenous Lands	No	-
Priority for biodiversity conservation	No	
Ownership		
Company group	Agrosustentável Participações; Solo e Mar Participações; HFM Comercialização de Carnes Nobres; Grupo Sal e Brasa	
Other linked properties	3 other properties, totaling 5,078 ha. In Benedito Leite (MA): Fazenda Santa Angela (1,299 ha.) In São Félix de Balsas (MA): Fazenda Chapada (1,632 ha); Fazenda Santo Antonio (2,147 ha)	
Supply Chain		
Main commodity	Soy	
Confirmed supply chain relation	No	
Soy	Main exporters (municipality)	[Domestic Consumption (100%)]
	Warehouses within 50 km radius	5 warehouses e.g.: 1 owned by Bunge (47,144 MT), 2 owned by Agropecuária Nova Era (29,017 MT)
	Supply chain details	-
Beef	Main exporters (municipality)	-
	Slaughterhouses sourcing from municipality	-
	Supply chain details	-
Other supply chain details	-	

Agrosustentável Participações, registered in Recife (PE), produces soy and corn (1). In June 2019, the company sought an environmental license to begin soy cultivation in Fazenda Brejão (2) in São Félix de Balsas (MA), the farm under alert. However, deforestation seemed to have also occurred in the declared Legal Reserve of the farm. Valdemir Baldissera, Paulo Luiz Alves Magnus and Solo e Mar Participações own the agribusiness company (1). Valdemir Baldissera is one of the partners of the steakhouse chain Grupo Sal e Brasa, with locations in nine Brazilian cities (3). Paulo Luiz Alves Magnus is the founder of MV Sistemas, a healthcare system contractor (4). Finally, Solo e Mar Participações is a third-party company also owned by the two businessmen and the fund Vitória Fundo de Investimento em Participações Multiestratégia, run by Planner Trustee Distribuidora de Títulos, which also hold assets in agribusiness companies such as CCA B Agro and Agroz Agrícola Zurita (5, 6).

(1) <https://brasilcnpj.net/cnpj/agrosustentavel-participacoes-ltda-28705594000155>

(2) <https://www.jusbrasil.com.br/diarios/248483006/doema-terceiros-24-06-2019-pg-57>

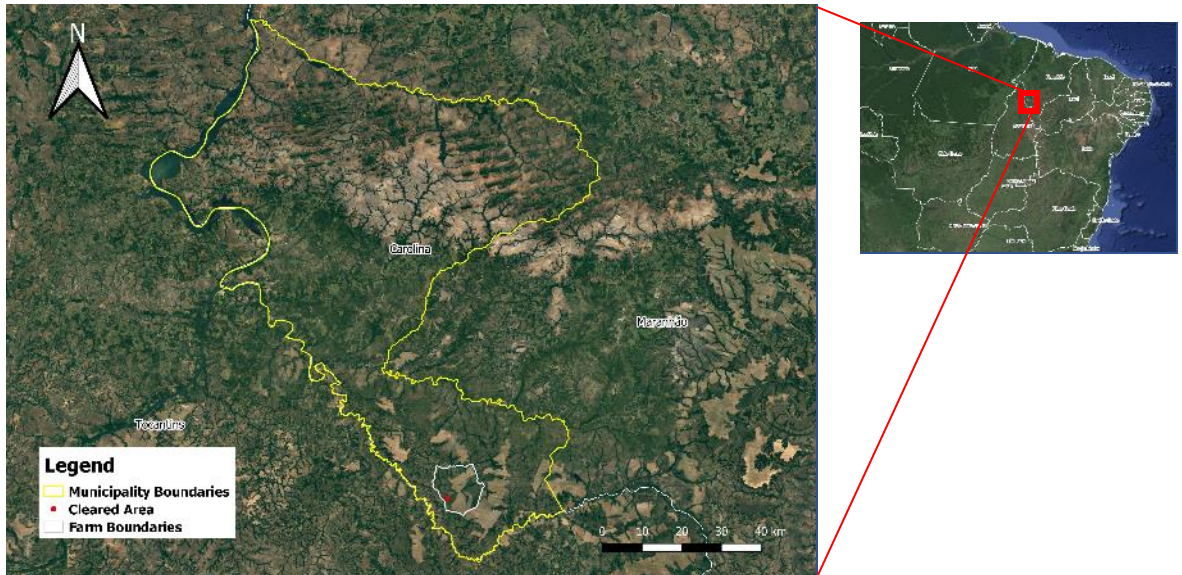
(3) <https://diariodonordeste.verdesmares.com.br/editorias/negocios/sal-e-brasa-abrira-mais-duas-unidades-em-fortaleza-1.1204960>

(4) http://www.mv.com.br/2oanos/fatos_marcantes/fatos_marcantes.shtml

(5) https://cvmweb.cvm.gov.br/SWB/Sistemas/SCW/CPublica/DemFinancFdoExclvFech/CPublicaDemFinancFdoExclvFech.aspx?PK_PARTIC=112806&COMPTC=&TpConsulta=23&TpPartic=73

(6) <https://www.fiduciario.com.br/relatorios-anuais/>

Property Location



Yellow border – boundary of Carolina (Maranhão) / White border – boundary of Fazenda Serrinha (Fazenda Horizonte) / Red dot – location of cleared area

Alert Imagery (before and after clearance)

14 February 2020



Source: European Union, contains modified Copernicus Sentinel data 2019, processed with EO Browser

22 May 2020



Source: European Union, contains modified Copernicus Sentinel data 2019, processed with EO Browser

5. Fazenda Serrinha (Fazenda Horizonte) (Carolina - MA)

General Information		
Property; Registry; CAR declaration	Fazenda Serrinha (Fazenda Horizonte)	9500413020234
	CAR	MA-2102804-E5A15F14337542AF801FC71BEC37B5A2
Size (ha); Coordinates	11,566	-7.89855, -47.04597
Land Clearance		
Period of clearing	14 Feb to 22 May 2020	
Size (ha); Coordinates	845	-7.92161, -47.07027
Inside Forest Code protected areas	No	-
Type of vegetation	Wooded Savanna	
Legal Status		
Embargoes	Yes	1 embargo for illegal clearance of 3,974 ha of native vegetation in 2014
Environmental fines	No	-
Natural Reserves	No	-
Indigenous Lands	No	-
Priority for biodiversity conservation	No	
Ownership		
Company group	Grupo Horizonte, registered in Marechal Cândido Rondon (PR)	
Other linked properties	22 other properties, totaling 37,130 ha. In Riachão das Neves (BA): Cabral (360 ha); Paineira (3,910 ha); Savana (16,070 ha.) In Palmeirante (TO): Paraná (1,960 ha.) In Itapiratins (TO): Belmonte (2,080 ha); Boi Preto (115 ha); Bananal (390 ha); Assunção (400 ha); Belos Montes (3,300 ha); Lote 68 (115 ha); São Salvador (440 ha); São Pedro da Baliza (50 ha); São José (460 ha); Nova Esperança (460 ha); Mutum (390 ha); Canto Alegre (280 ha.) In Araguaína (TO): Fazenda Bonanza (1,210 ha.) In Santa Rosa do Tocantins (TO): Certeza (1,310 ha); Luna (540 ha); Santo Antônio (2,550 ha); Brejinho (240 ha.) In São Félix do Tocantins (TO): Jalapão (500 ha)	
Supply Chain		
Main commodity	Soy and cotton	
Confirmed supply chain relation	Yes	
Soy	Main exporters (municipality)	Bunge (58%), Cargill (42%)
	Warehouses within 50 km radius	6 warehouses e.g.: 1 owned by ABC Indústria e Comércio (49,820 MT), 1 owned by Cargill (29,420 MT), 1 owned by Osvino Ricardi (14,456 MT) - within the boundaries of the property under alert
	Supply chain details	Registered as soy producer in Santa Rosa dos Santos (TO) and in Palmeirante (TO)
Beef	Main exporters (municipality)	Minerva (90%), Masterboi (10%)
	Slaughterhouses sourcing from municipality	8 different beef processors sourced cattle from Carolina in 2018
	Supply chain details	Linked property, Fazenda Paraná (Palmeirante - TO), supplied a slaughterhouse owned by JBS (Araguaína - TO) in 2020 and a slaughterhouse owned by Minerva (Araguaína - TO) in 2018
Other supply chain details	Linked property, Fazenda Savana (Riachão das Neves - BA), is active in cotton production	

5. Fazenda Serrinha (Fazenda Horizonte) (Carolina - MA)

Originally from Marechal Rondon (PR), the owner is an active member of the Cooproeste (Cooperativa Agropecuária do Oeste da Bahia) and is also registered as a soy and cattle producer in different municipalities in Tocantins. The family owns the company Agrícola Horizonte (1), registered in Paraná. A relative is an active producer of soy and corn in Itapiratins (TO) (2). The owner is a producer of soy, corn, wheat and cotton with a total of 40,000 hectares in properties in Paraná, Bahia, Tocantins and Maranhão (3). The owner is involved in a land dispute in Carolina (MA) linked to Fazenda Agro Santos 1A and 1C (5). This area is contiguous to the property of this case, Fazenda Serrinha (Fazenda Horizonte), also known as Fazenda Agro Santos 1B (6).

(1) <https://www.agricolahorizonte.com.br/>

(2) <https://www.youtube.com/watch?v=vm-agmGeEKE>

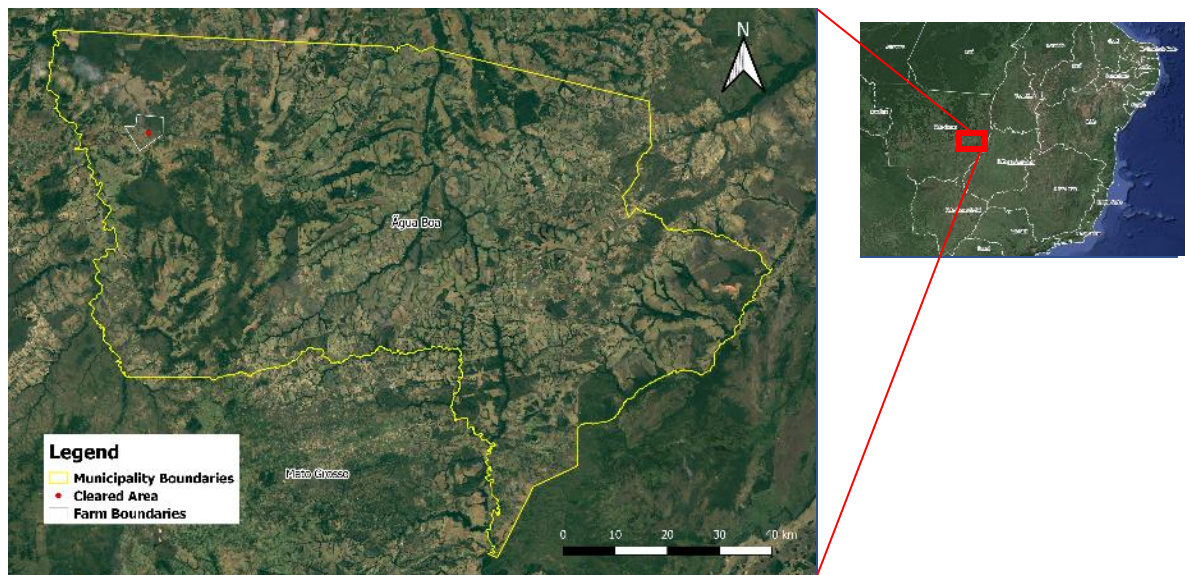
(3) <https://agrovevenda.com.br/top-farmers-2019-grupo-conecta-aposta-no-conhecimento/>

(4) <http://dadosabertos.ibama.gov.br/dataset/termos-de-embargo>

(5) <https://www.jusbrasil.com.br/diarios/137745904/djma-17-02-2017-pg-492?ref=serp>

(6) https://www.jusbrasil.com.br/diarios/121279924/djma-25-07-2016-pg-80?ref=next_button

Property Location



Yellow border – boundary of Água Boa (Mato Grosso) / White border – boundary of Fazenda Porangaba / Red dot – location of cleared area

Alert Imagery (before and after clearance)

14 January 2020



Source: European Union, contains modified Copernicus Sentinel data 2019, processed with EO Browser

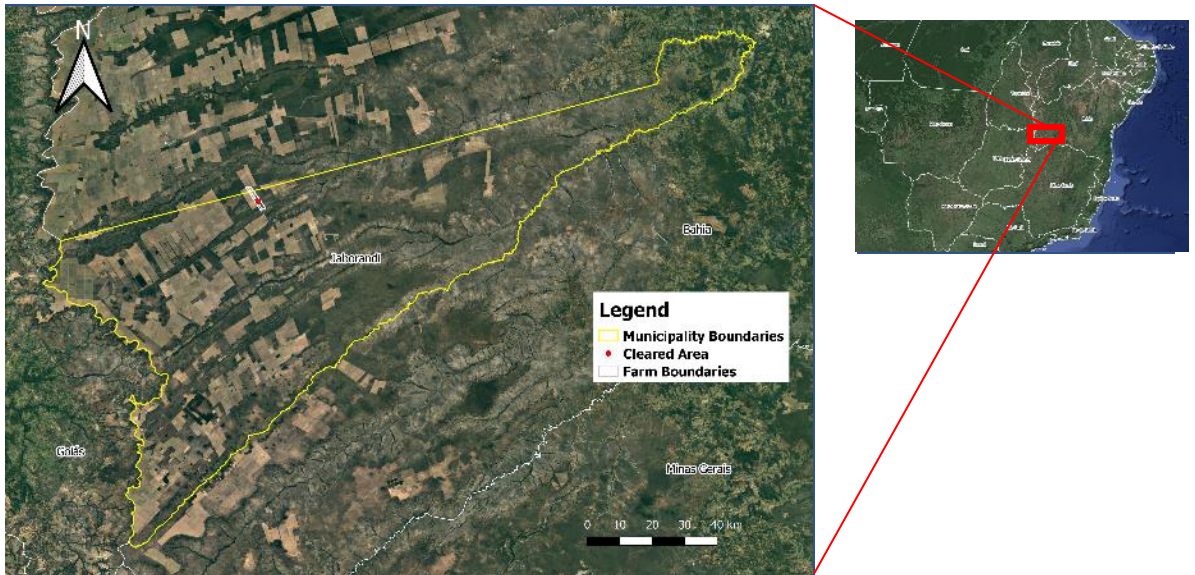
02 June 2020



Source: European Union, contains modified Copernicus Sentinel data 2019, processed with EO Browser

General Information		
Property; Registry; CAR declaration	Fazenda Porangaba	-
	CAR	MT-5100201-D38CD88F4E0E4ED38AE5515870D7382E
Size (ha); Coordinates	3,072	-13.80616, -52.93837
Land Clearance		
Period of clearing	14 Jan to 02 Jun 2020	
Size (ha); Coordinates	510	-13.81008, -52.93389
Inside Forest Code protected areas	Yes	3 ha inside declared Legal Reserve
Type of vegetation	Savanna Park	
Legal Status		
Embargoes	Yes	1 embargo for illegal clearance of 140 ha of native vegetation in 2011
Environmental fines	Yes	1 fine for illegal clearance of 140 ha of native vegetation in Fazenda Iporanga in 2011
Natural Reserves	No	-
Indigenous Lands	No	-
Priority for biodiversity conservation	Very high	
Ownership		
Company group	Madeira Porangaba, registered in Rondonópolis (MT)	
Other linked properties	6 other properties, totaling at least 9,130 ha. In Cocalinho (MT): Fazenda Marruá (unknown area); Fazenda Jussara (2,500 ha); Fazenda Xavante (1,650 ha); Fazenda Lealdade (4,980 ha.) In Água Boa (MT): Fazenda Presença II (unknown area); Fazenda Cachoeira (unknown area)	
Supply Chain		
Main commodity	Beef	
Confirmed supply chain relation	Yes	
Soy	Main exporters (municipality)	Cargill (29%), Caramura (18%), others (29%) [<i>Domestic Consumption (24%)</i>]
	Warehouses within 50 km radius	5 warehouses e.g.: 1 owned by CHS Agronegócio (74,000 MT), 1 owned by Ferrari Agroindústria (12,800 MT)
	Supply chain details	-
Beef	Main exporters (municipality)	Frisa Frigorífico Rio Doce (67%), Mataboi Alimentos (14%), Maxi Beef Alimentos do Brasil (10%), others (9%)
	Slaughterhouses sourcing from municipality	5 different beef processors sourced cattle from Água Boa in 2019, e.g.: 2 owned by JBS (Água Boa - MT and Barra do Garças - MT)
	Supply chain details	Linked property, Fazenda Lealdade (Cocalinho - MT), supplied two slaughterhouses owned by Marfrig (Nova Xavantina - MT, Paranatinga - MT) in 2019. Two other linked properties, Fazenda Cachoeira (Água Boa - MT) and Fazenda Lealdade (Cocalinho - MT) are registered for cattle production
Other supply chain details	-	

Property Location



Yellow border – boundary of Jaborandi (Bahia)/ White border – boundary of Fazenda Butiatuvinha e Outra / Red dot – location of cleared area

Alert Imagery (before and after clearance)

10 January 2020



Source: European Union, contains modified Copernicus Sentinel data 2019, processed with EO Browser

29 May 2020



Source: European Union, contains modified Copernicus Sentinel data 2019, processed with EO Browser

7. Fazenda Butiatuvinha e Outra (Jaborandi - BA)

General Information			
Property; Registry; CAR declaration	Fazenda Butiatuvinha e Outra		600916858
	CAR	BA-2917359-41B4.622C.55BF.430A.847B.732D.8E43.27D3; BA-2917359-E2E7.F38D.286F.457B.BoBo.CE20.9CEC.53B3	
Size (ha); Coordinates	1,265	-13.86098, -45.65348	
Land Clearance			
Period of clearing	10 Jan to 29 May 2020		
Size (ha); Coordinates	350	-13.86998, -45.65055	
Inside Forest Code protected areas	No	-	-
Type of vegetation	Forested Savanna		
Legal Status			
Embargoes	Yes	1 embargo for illegal clearance of 1,989 ha of native vegetation (lifted in 2017)	
Environmental fines	Yes	5 fines for illegal clearance of a total of 3,867 ha of native vegetation between 2006 and 2015 in Jaborandi and Correntina	BRL 3,575,390
Natural Reserves	No	-	
Indigenous Lands	No	-	
Priority for biodiversity conservation	Extremely high		
Ownership			
Company group	Comercial Agropecuária AJ Manfron, registered in Curitiba (PR)		
Other linked properties	9 other properties, totaling at least 1,000 ha. In Jaborandi (BA): Fazendas Butiatuvinha I and II (1,000 ha); Fazenda Butiatuvinha VII, VIII, and IX (unknown area); Fazenda Pinheiros I and II (unknown area); Fazenda Santa Felicidade (unknown area)		
Supply Chain			
Main commodity	Soy		
Confirmed supply chain relation	No		
Soy	Main exporters (municipality)	Bunge (6%) [<i>Domestic Consumption (94%)</i>]	
	Warehouses within 50 km radius	12 warehouses e.g.: 1 owned by Cristina Maria Lamers (290,000 MT), 1 owned by Harold Kudiess (35,800 MT), 1 owned by SLC Agrícola (25,040 MT)	
	Supply chain details	-	
Beef	Main exporters (municipality)	JBS (80%), Frigosol Frigorífico Sul Bahia (20%)	
	Slaughterhouses sourcing from municipality	29 different beef processors sourced cattle from Jaborandi in 2017, e.g.: 1 owned by JBS (Itapetinga - BA)	
	Supply chain details	-	
Other supply chain details	-		

The owner of Fazenda Butiatuvinha e Outra, Aldemir João Manfron, operates the company Comercial Agropecuária AJ Manfron. This company is involved in the wholesale trade of goods, primarily agricultural inputs and the production of several grains and soy (1). Aldemir was granted authorization for the deforestation of 1,545 ha at his farms Fazendas Butiatuvinha, I, II, VII, VIII, IX, Pinheiros I e II in 2019. The authorization is valid for two years (2). Nevertheless, in the past, he received multiple environmental fines (BRL 3,575,390) on his farms in Jaborandi and Correntina (BA), for clearing a total of 3,867 ha of native vegetation without authorization (3). Both Aldemir and his wife Maria Manfron are active in politics. Aldemir was counselor of Curitiba for seven consecutive terms (4). Now Aldemir has stepped out of politics and has been “dedicating himself to the corn and soy plantations he has in the interior of Bahia” (5).

(1) <https://www.cnpjconsultas.com/empresa/comercial-agropecuaria-a-j-manfron-ltda/02495867000190>

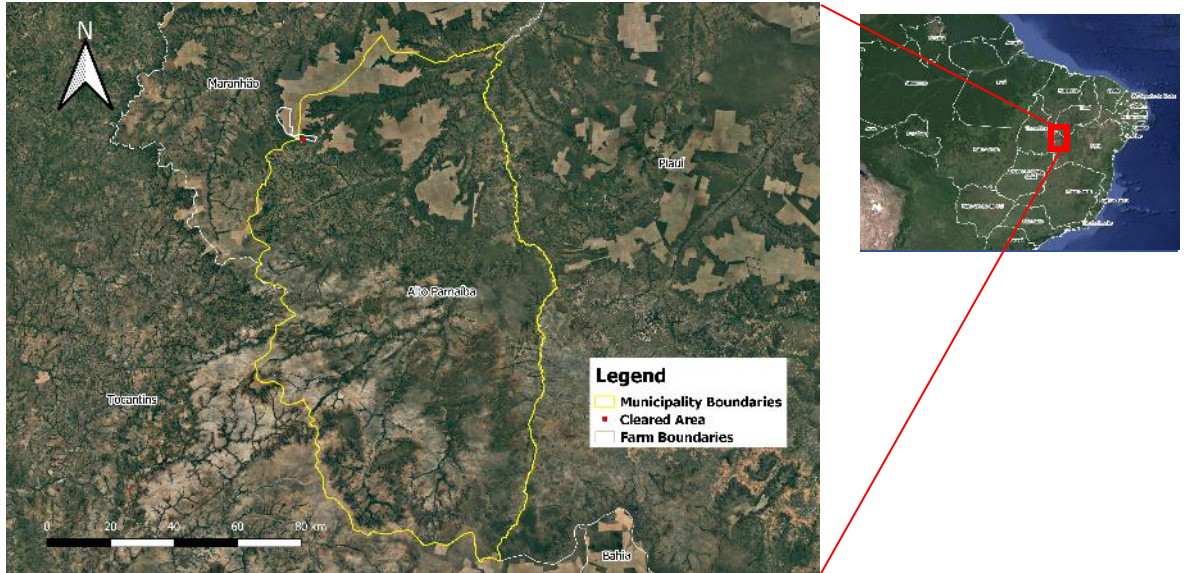
(2) <https://www.escavador.com/diarios/924126/DOEBA/executivo/2019-06-05?page=34>

(3) <http://dadosabertos.ibama.gov.br/dataset/autos-de-infracao>

(4) https://www.cmc.pr.gov.br/ver_det.php?ver=

(5) <https://www.gazetadopovo.com.br/politica/parana/comissionados-empresarios-ou-no-desempregoa-vida-dos-ex-ereadores-de-curitiba-282si4bl5372j9ct8eom439yr>

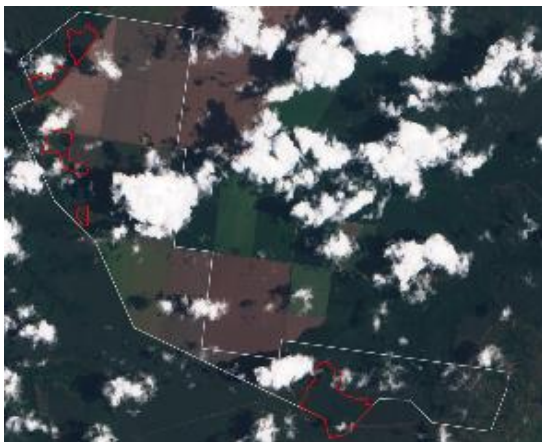
Property Location



Yellow border – boundary of Alto Parnaíba (Maranhão) / White border – boundary of Fazenda Tabatinga / Red dot – location of cleared area

Alert Imagery (before and after clearance)

17 February 2020



Source: European Union, contains modified Copernicus Sentinel data 2019, processed with EO Browser

07 April 2020



Source: European Union, contains modified Copernicus Sentinel data 2019, processed with EO Browser

8. Fazenda Tabatinga (Alto Parnaíba - MA)

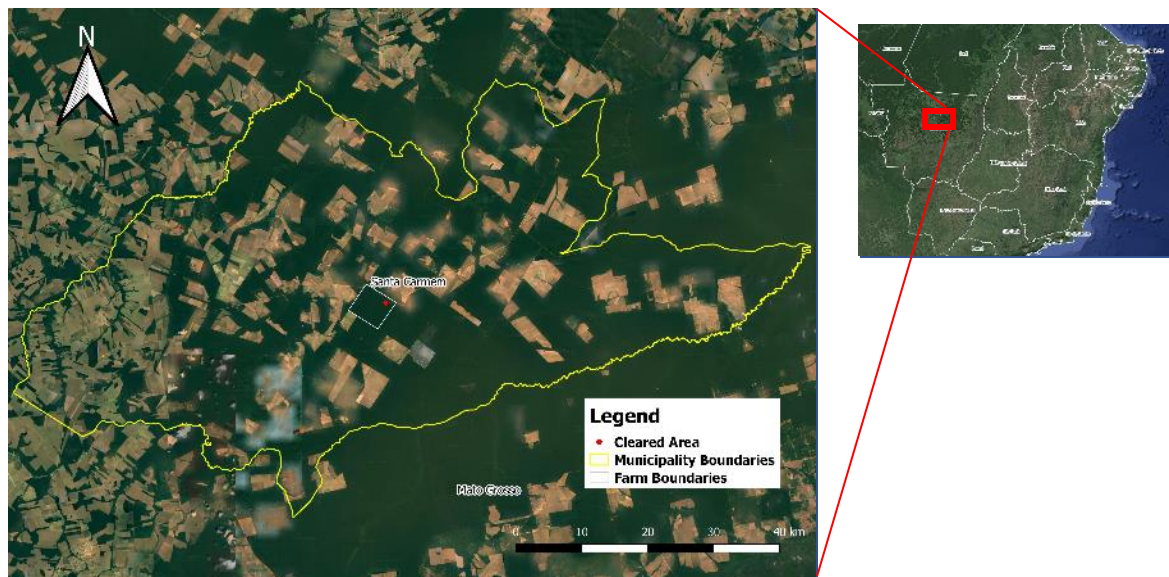
General Information			
Property; Registry; CAR declaration	Fazenda Tabatinga		2292530470316
	CAR	MA-2100501-C95EAD144D69479E98AF093E533EDFBo	
Size (ha); Coordinates	5,356	-9.02731, -46.55541	
Land Clearance			
Period of clearing	17 Feb to 07 Apr 2020		
Size (ha); Coordinates	324	-9.05653, -45.51442	
Inside Forest Code protected areas	No	-	-
Type of vegetation	Wooded Savanna		
Legal Status			
Embargoes	No	-	
Environmental fines	Yes	1 fine for illegal clearance of 2,360 ha of native vegetation in Fazenda Tabatinga in 2002 and 2003	unknown amount
Natural Reserves	No	-	
Indigenous Lands	No	-	
Priority for biodiversity conservation	High		
Ownership			
Company group	Agromantova, registered in Balsas (MA)		
Other linked properties	5 other properties, totaling at least 21,400 ha. In Alto Parnaíba (MA): Fazenda MR (1,130 ha); Fazenda Escuro (5,960 ha.) In Balsas (MA): Fazenda Boa Esperança (unknown area); Serra Branca (8,042 ha.) In Tasso Fragoso (MA): Terra Nova (5,300 ha)		
Supply Chain			
Main commodity	Soy		
Confirmed supply chain relation	Yes		
Soy	Main exporters (municipality)	Gavilon (60%), ADM (15%), others (2%) [<i>Domestic Consumption (23%)</i>]	
	Warehouses within 50 km radius	11 warehouses e.g.: 3 owned by Weisul Agrícola (997,000 MT), 2 owned by Agrinvest Brasil (56,480 MT)	
	Supply chain details	Fazenda Tabatinga supplied corn to Multigrain and Notaro in 2014 and has commercial links to Cargill	
Beef	Main exporters (municipality)	Mataboi Alimentos (100%)	
	Slaughterhouses sourcing from municipality	2 different beef processors sourced from Alto Parnaíba in 2018	
	Supply chain details	-	
Other supply chain details	Agromantova is registered as a corn producer company		

The family of the owners is involved in a land dispute with Agropecuária Caracol (linked to Harvard farmland investments) in Alto Parnaíba (MA) (1). One of the family members also sued the State of Maranhão for a fine linked to illegal clearance of native vegetation of 2,360 ha in Fazenda Tabatinga (2).

(1) https://www3.tjma.jus.br/diario/diarios/diario_21082018_114940_150.pdf.pdf

(2) <https://www.jusbrasil.com.br/processos/202627585/processo-n-0813543-5420188100001-do-tjma>

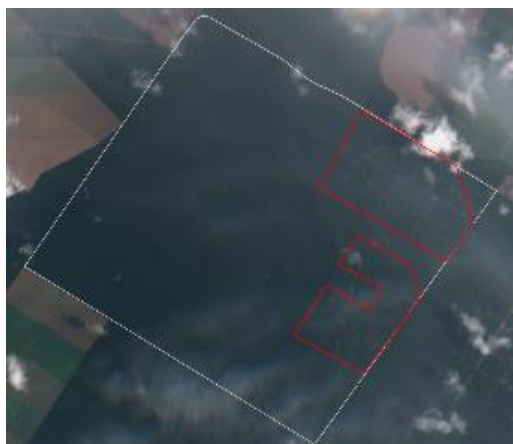
Property Location



Yellow border – boundary of Santa Carmem (Mato Grosso) / White border – boundary of Fazenda Soledade / Red dot – location of cleared area

Alert Imagery (before and after clearance)

08 November 2019



Source: European Union, contains modified Copernicus Sentinel data 2019, processed with EO Browser

06 April 2020



Source: European Union, contains modified Copernicus Sentinel data 2019, processed with EO Browser

9. Fazenda Soledade (Santa Carmem - MT)

General Information		
Property; Registry; CAR declaration	Fazenda Soledade	
	CAR	MT-51 07248-1025F299474640148FE845C7A0B62635
Size (ha); Coordinates	2,583	-11.95952, -54.90080
Land Clearance		
Period of clearing	08 Nov 2019 to 06 Apr 2020	
Size (ha); Coordinates	496	-11.95473, -54.88195
Inside Forest Code protected areas	No	-
Type of vegetation	Ombrophilous forest transition	
Legal Status		
Embargoes	No	-
Environmental fines	No	-
Natural Reserves	No	-
Indigenous Lands	No	-
Priority for biodiversity conservation	No	
Ownership		
Company group	Madenorte; Madenorte Agroindustrial	
Other linked properties	15 other properties, totaling 24,176 ha. In Sinop-MT: Fazenda Indaial (3,434 ha); Fazenda Indaial II (6,294 ha); Fazenda Asa Branca (3,525 ha); Fazenda Guabiruba (2,513 ha); Fazenda Trevo 2 (4,900 ha); Fazenda Cascalheira (319 ha); Lote 102 Gleba Santa Felicidade (1,500 ha); Fazenda Esperança (986 ha), Fazenda Andrea (116); Lote 101 Gleba Santa Felicidade (1,500 ha); Lote 99 Gleba Santa Felicidade (1,500 ha); Lote 100 Gleba Santa Felicidade (1,552 ha.) In Cláudia (MT): Fazenda São João Part 1 and 2 (3,343 ha). In Santa Carmem (MT) and Cláudia (MT): Fazenda Blumenau (4,552 ha)	
Supply Chain		
Main commodity	Multiple	
Confirmed supply chain relation	Yes	
Soy	Main exporters (municipality)	Glencore (36%), Cofco (28%), Engelhart (26%), others (10%)
	Warehouses within 50 km radius	35 warehouses e.g.: 2 owned by Sipal Indústria e Comércio (159,849 MT), 1 owned by Cofco (68,080 MT)
	Supply chain details	Supplied soy and corn to Glencore, Louis Dreyfus, Cargill, Gaviion, and Aliança Agrícola do Cerrado in 2019
Beef	Main exporters (municipality)	JBS (56%), Vale Grande (41%), others (3%)
	Slaughterhouses sourcing from municipality	3 different beef processors sourced cattle from Santa Carmem in 2019, e.g.: 1 owned by JBS (Diamantino - MT)
	Supply chain details	-
Other supply chain details	Fazenda Soledade supplied timber to DMAR Indústria e Comércio de Madeiras in 2019	

While Fazenda Soledade and linked logging company Madenorte are primarily involved in timber production, the owner of this farm Lourival Tomelin has clear linkages to some of the largest grain traders, such as Glencore, Cargill, and LDC. In 2019, Lourival supplied soy and corn to these traders from several of his 9 farms in Sinop (MT) (1), with a total area of 12,347 ha. In 2018, he cleared 955 ha in Fazenda Trevo, in Sinop (MT), an area that is declared a Legal Reserve under the Brazilian Forest Code (2). Lourival owns Madenorte Agroindustrial, a warehouse with 59,000 MT capacity involved in wholesale of cereals and vegetables. Moreover, he owns Madenorte, the logging company mentioned above (3). He used to operate this company with his brother Comercindo Tomelin (4), who founded Madeirato Madeiras. This latter logging company was closed in 2007 as a result of “Operation Curupira” that dismantled an illegal logging scheme (5, 6).

(1) <https://www.conab.gov.br> & undisclosed documents

(2) RR analysis

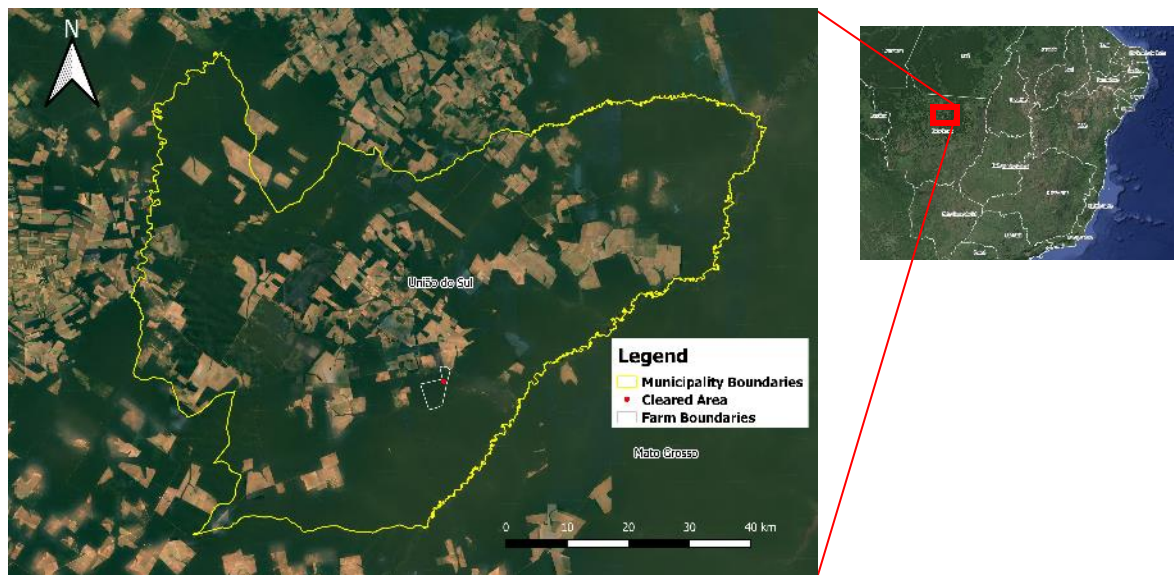
(3) <https://www.consultasocio.com/q/sa/lourival-tomelin>

(4) <https://www.al.mt.gov.br/storage/webdisco/cp/20150415074317624000.pdf>

(5) http://www.mightyearth.org/wp-content/uploads/RR_Report_12_April_2020_Revised.pdf

(6) <https://www.escavador.com/processos/104314333/processo-1006776-1020198110015-do-diario-de-justica-do-estado-do-mato-grosso?ano=2019>

Property Location



Yellow border – boundary of União do Sul (Mato Grosso)/ White border – boundary of Fazenda Renascer / Red dot – location of cleared area

Alert Imagery (before and after clearance)

28 February 2020



Source: European Union, contains modified Copernicus Sentinel data 2019, processed with EO Browser

08 April 2020



Source: European Union, contains modified Copernicus Sentinel data 2019, processed with EO Browser

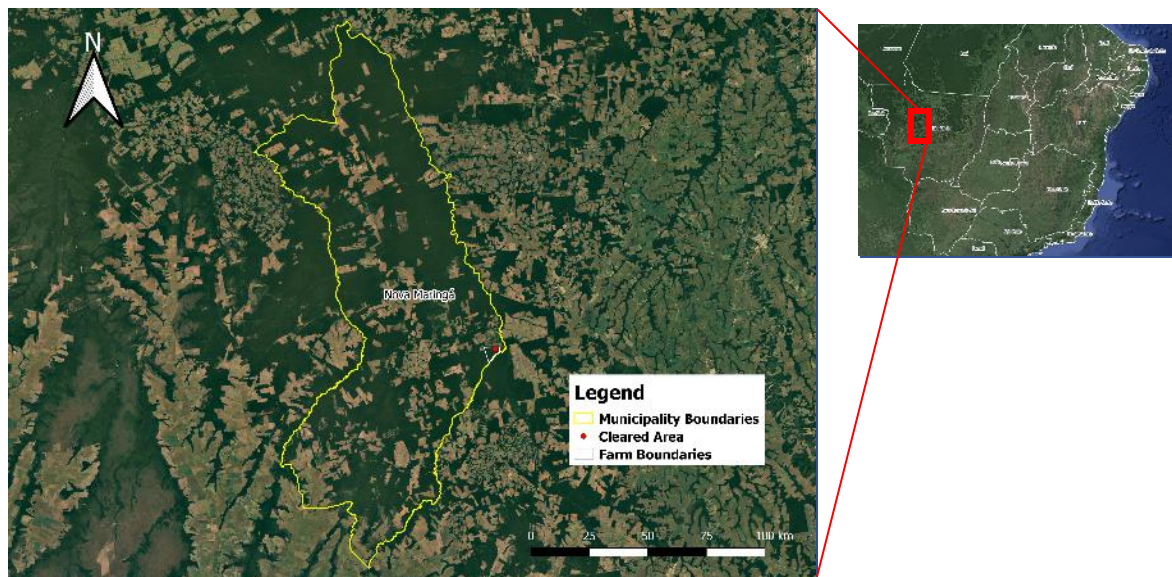
10. Fazenda Renascer (União do Sul - MT)

General Information		
Property; Registry; CAR declaration	Fazenda Renascer	9014311010879
	CAR	MT-5108303-6C7B20B7DBB14A0DB17C7FCCoE215010
Size (ha); Coordinates	1,737	-11.67508, -54.27434
Land Clearance		
Period of clearing	28 Feb to 08 Apr 2020	
Size (ha); Coordinates	350	-11.66245, -54.26314
Inside Forest Code protected areas	No	--
Type of vegetation	Ombrophilous Forest transition	
Legal Status		
Embargoes	No	-
Environmental fines	No	-
Natural Reserves	No	-
Indigenous Lands	No	-
Priority for biodiversity conservation	Extremely high	
Ownership		
Company group	União Armazéns Gerais	
Other linked properties	4 other properties, totaling at least 1,147 ha. In União Do Sul (MT): Fazenda Brasão (1,021 ha); Fazenda Gabriela (unknown area); Fazenda Elisa (126 ha). In Sinop (MT): Fazenda Luíza (unknown area)	
Supply Chain		
Main commodity	Multiple	
Confirmed supply chain relation	Yes	
Soy	Main exporters (municipality)	Amaggi (70%), Multigrain (22%), Bunge (8%)
	Warehouses within 50 km radius	12 warehouses e.g.: 1 owned by Scheffer Armazéns Gerais (61,140 MT), 2 owned by União Armazéns Gerais (40,840 MT) - linked to the owner of the farm under alert
	Supply chain details	A linked property (Fazenda Brasão) sold soy to Cargill and Bunge in 2019
Beef	Main exporters (municipality)	JBS (76%), Marfrig (22%), others (2%)
	Slaughterhouses sourcing from municipality	3 different beef processors sourced cattle from União do Sul in 2019, e.g.: 2 owned by JBS (Colider - MT and Diamantino - MT), 1 owned by Vale Grande (Colider - MT)
	Supply chain details	Linked properties, Fazenda Brasão (União do Sul - MT) and Fazenda Gabriela (União do Sul - MT), supplied a slaughterhouse owned by Frigorífico Colider (Colider - MT)
Other supply chain details		Linked property, Fazenda Brasão (União do Sul - MT), supplied corn to Cargill and Multigrain in 2017 and to Cofco, Cargill and Inpasa in 2019 (Inpasa is the largest Brazilian corn-based ethanol producer)

The owners were active in soy production in 2014 and now are active in the beef supply chain. In 2008, one of the owners was ordered to transfer the ownership of 389 hectares to the environmental agency of Mato Grosso as part of a compensation agreement for the illegal clearance of native vegetation in the declared Legal Reserve of a linked property, Fazenda Luíza in Sinop (MT) (1). In February 2020, Fazenda Renascer obtained an authorization for the deforestation of 343 hectares, as well as authorization for timber trading.

(1) <https://www.jusbrasil.com.br/diarios/7322115/pg-19-diario-oficial-do-estado-do-mato-grosso-doemt-de-13-03-2008>

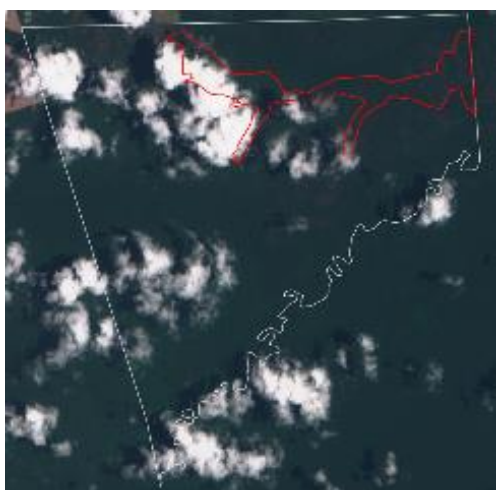
Property Location



Yellow border – boundary of Nova Maringá (Mato Grosso)/ White border – boundary of Fazenda Cunhataí VII / Red dot – location of cleared area

Alert Imagery (before and after clearance)

01 February 2020



Source: European Union, contains modified Copernicus Sentinel data 2019, processed with EO Browser

31 May 2020



Source: European Union, contains modified Copernicus Sentinel data 2019, processed with EO Browser

11. Cunhataí VII (Nova Maringá - MT)

General Information		
Property; Registry; CAR declaration	Cunhataí VII	
	CAR	MT-5108907-F77401C34FFA4E6E8C4E17DB9FCC563F
Size (ha); Coordinates	2,517	-12.98036, -56.79564
Land Clearance		
Period of clearing	01 Feb to 31 May 2020	
Size (ha); Coordinates	215	-12.96621, -56.78058
Inside Forest Code protected areas	No	-
Type of vegetation	Ombrophilous Forest transition	
Legal Status		
Embargoes	Yes	1 embargo for illegal clearance of 40 ha of native vegetation in 2020 (issued by the Mato Grosso State Environmental Agency), linked to the deforestation reported in this case
Environmental fines	No	-
Natural Reserves	No	-
Indigenous Lands	No	-
Priority for biodiversity conservation	Very high	
Ownership		
Company group	Agropora Armazéns Gerais, registered in Alto Garças (MT)	
Other linked properties	9 other properties, totaling 24,225 ha. In Nova Mutum (MT): Fazenda Amazônia (1,350 ha); Fazenda Piuva (1,840 ha.) In São José do Rio Claro (MT): Fazenda Cunhataí III, IV, V and VI (10,730 ha); Fazenda Massapé and Fazenda Massapé I and II (1,965 ha.) In Alto Araguaia (MT): Fazenda Cruzeiro do Sul (3,945 ha.) In Itiquira (MT): Fazenda Coxilha (2,090 ha.) In Pedra Preta (MT): Fazenda Campo Azul (410 ha); Fazenda Campo Azul V, VI, VII, VIII, IX (785 ha.) In Campo Novo do Parecis (MT): Fazenda Passo Alto and Passo Alto 1 and 2 (1,110 ha)	
Supply Chain		
Main commodity	Soy	
Confirmed supply chain relation	No	
Soy	Main exporters (municipality)	ADM (50%), Cofco (9%) [Domestic Consumption (41%)]
	Warehouses within 50 km radius	40 warehouses e.g.: 1 owned by Novagri (97,000 MT), 2 owned by Cofco (38,000 MT)
	Supply chain details	A linked property (Fazenda Passo Alto) supplied soy to ABJ Comércio Agrícola (owned by Grupo Bom Jesus) in 2018 and 2019
Beef	Main exporters (municipality)	JBS (50%), Marfrig (29%), Minerva (7%), others (14%)
	Slaughterhouses sourcing from municipality	13 different beef processors sourced cattle from Nova Maringá in 2019, e.g.: 2 owned by JBS (Diamantino - MT and Juara - MT), 1 owned by Minerva (Varzea Grande - MT), 1 owned by Marfrig (Tangará da Serra - MT)
	Supply chain details	-
Other supply chain details	-	

In April 2020, 40 hectares of native vegetation cleared area that is reported in this case inside the property Cunhataí VII was embargoed by the environment agency of Mato Grosso for illegal clearance of native vegetation (1). There is an environmental fine active (340,000 BRL) in a linked property in São José do Rio Claro (MT) for illegal clearance of native vegetation in 2017 (2). Zaid Arbid, one of the owners of the property Cunhataí VII, is a lawyer involved in the defence of João Arcanjo Ribeiro, who spent 14 years in jail for illegal gambling and money laundering and was arrested again in May 2019 by the Civil Police operation Mantus (3).

(1) <https://monitoramento.sema.mt.gov.br/simcar/tecnico.app/publico/mapa>

(2) <https://servicos.ibama.gov.br/ctf/publico/areasembargadas/ConsultaPublicaAreasEmbargadas.php>

(3) <https://www.midianews.com.br/cotidiano/advogado-arcanjo-nao-cometeria-a-burrice-de-voltar-ao-crime/351833>

Glossary

Deforestation and land clearance - Any land use change already classified as loss of native vegetation by deforestation alert systems

Agrarian conflicts - Include conflicts about land tenure, natural resources (water, forests), slave labor, other crimes, and human right issues

Embargoed areas - Areas where any kind of activity is suspended or not authorized by the Federal Environmental Agency (IBAMA) due to environmental degradation or irregularity

Environmental fines - List of environmental infractions that resulted in fines addressed to the owner of the property where the crimes were found

Forest Code protected areas - Areas defined by the Brazilian Forest Code that have mandatory conservation status in private properties. *Legal Reserves* [80% Amazonia biome, 35% Cerrado biome inside Legal Amazon, 20% other areas] and *Permanent Preservation Areas (APP)* linked to water and soil conservation (close to river bases, wetlands, slopes, and high hills). The Legal Reserve and APP areas considered in this report are those self-declared within the Environmental Register System “Cadastro Ambiental Rural – CAR”. In some cases, the CAR was also used to find information on ownership because even if it is a self-declared document, sometimes, it provides the most recent information on the probable ownership of a property.

Illegal deforestation - Any deforestation event occurring without an authorization of the state or federal environmental agency, or any deforestation that is inside a Legal Reserve or a Permanent Preservation Area (APP)

Natural Reserves - Officially recognized Natural Reserves according to the National System of Natural Reserves (SNUC – Sistema Nacional de Unidades de Conservação). The SNUC determines jurisdiction of the area - federal, state or local government, or private owner - and how the natural resources may be used by whom in each of the natural reserves’ categories.

Indigenous lands - Lands under FUNAI (National Foundation for Indigenous People) defined as a heritage right of local indigenous populations where any activity not linked to these groups is not allowed.

Priority for Biodiversity conservation - Brazilian Ministry of Environment (MMA) study listing the biodiversity hotspots in Brazil and the priority of actions for biodiversity conservation in these areas.

* * * *

The Rapid Response program has received support, in part, from the International Climate and Forest Initiative (NICFI) scheme managed by the Norwegian Agency for Development Cooperation (Norad). This report does not necessarily reflect the standpoints of Norad.

The work of Mighty Earth is supported by Waxman Strategies. Waxman Strategies’ work on forest conservation is funded in part by Aidenvironment. Waxman is required under 22 U.S.C. § 614 to disclose that this material is distributed on behalf of the aforementioned organization, working under grant from the Norwegian Agency for Development Cooperation. Additional information is on file with the Department of Justice, Washington, D.C.