



MIGHTY EARTH



RAPID RESPONSE Palm Oil Report

Report 39
May 2022



Prepared with support from

MapHubs



Table of Contents

Cases identified using Planet and other spatial imagery

Indonesia Companies

New cases

PT Sawit Sukses Sejati: Group affiliated with PT Teguhkarsa Wanalestari	3
PT Usaha Sawit Unggul: Group affiliated with PT Teguhkarsa Wanalestari	8

Supply chain information:

Supply chain information included in Rapid Response reports is based on the latest public versions of mill disclosures, recent export data, and company grievance logs. Mighty Earth encourages companies to send updated versions of mill disclosures as soon as they become available and to share any decision to suspend relations with a given group/company listed in those mill disclosures with rapidresponse@mightyearth.org.

Mighty Earth is now including biofuel companies and other manufacturers in the supply chain tables of Rapid Response reports, as these companies have both direct and indirect trading relationships with groups highlighted in these reports and should be filing grievances on these cases. These companies are listed in the "Supply Chain Information" tables.

New Case

Group: Group associated with PT Teguhkarsa Wanalestari

PT Sawit Sukses Sejati (former PT Anugerah Langkat Makmur)

Concession location: 1.037677 99.036329

Deforestation and/or peat development

Report	Deforestation (ha)	Peat development (ha)	Peat forest development (ha)	Clearance prep/Stacking lines (ha)	Time period
Report 39	~340 (indicative HCS)	-	-	-	April 2021 - March 2022

Satellite imagery (see below) shows that between April 2021 and March 2022 a total of ~340 hectares of forest (indicative HCS) was cleared in the PT Sawit Sukses Sejati concessions, based on the HGU published boundaries. (Imagery: 2021-2 Planet Labs Inc).

Supply Chain Information

Company/Group	Trader/Producer	Biofuel / other manufacturers	Consumer Brand
PT Sawit Sukses Sejati	Sumber Tani Agung	n/a	n/a
STA Group (sourcing from PT Sawit Sukses Sejati)	AAK, ADM, BLC, Cargill, COFCO Int, Felda IFFCO, Fuji Oil, Itochu, KLK. LDC, Musim Mas, Olam, PIL, Sime Darby, Wilmar	BASF, Lipsa, Neste, Permata Hijau	Colgate Palmolive, Danone, Ferrero, Friesland Campina, General Mills, Hershey, J&J, Kellogg's, L'Oreal, Meji Group, Mondelez, Nestle, Nisshin Oillio, Pepsici, P&G, PZ Cussons, Reckitt Benckiser, Unilever, Upfield, Vandermoortele

Supply Chain Information (cont.)

Company/Group	Trader/Producer	Biofuel / other manufacturers	Consumer Brand
PT Teguhkarsa Wanalestari (associated with PT Sawit Sukses Sejati)	AAK, Apical, ADM, BLC, Cargill, COFCO Int, Felda IFFCO, KLK, LDC, Mewah, Olam, PIL, Sime Darby	BASF, Lipidos, Neste, Oleon	Colgate Palmolive, Danone, Friesland Campina, Hershey, General Mills, J&J, Kellogg's, L'Oreal, Nestle, P&G, Pepsico, PZ Cussons, Reckitt Benckiser, Unilever, Upfield, Vandemoortele
PT Asia Sawit Lestari (associated with PT Sawit Sukses Sejati/PT Teguhkarsa Wanalestari)	AAK, ADM, Apical, Cargill, COFCO Int, Felda IFFCO, Fuji Oil, KLK, LDC, Mewah, Olam, PIL, Sime Darby, Wilmar	BASF, Lipidos, Neste, Oleon	Danone, Friesland Campina, General Mills, Hershey J&J, Kellogg's, L'Oreal, Mondelez, Nestle, Nisshn Ollio, Pepsico, P&G, PZ Cussons, Reckitt Benckiser, Unilever, Upfield, Vandemoortele
PT Prima Mas Lestari (associated with PT Sawit Sukses Sejati/PT Teguhkarsa Wanalestari)	AAK, ADM, Apical, Cargill, COFCO Int, Felda IFFCO, Fuji Oil, KLK, LDC, Olam, PIL, Sime Darby, Wilmar	BASF, Lipidos, Neste, Oleon	Colgate Palmolive, Danone, Ferrero, Friesland Campina, General Mills, Hershey J&J, Nisshn Ollio, Pepsico, P&G, PZ Cussons, Reckitt Benckiser, Unilever, Upfield, Vandemoortele

Mapping Group-level Ownership

According to confidential industry sources and [an article](#) in the Indonesia media, PT Sawit Sukses Sejati took over the concessions of PT Anugerah Langkat Makmur (ALAM Group) in 2021.

PT Sawit Sukses Sejati is 90% controlled through the British Virgin Islands (BVI) offshore holding company **Jalan Abesin Limited**:

a) 95% owned by PT Sumatera Makmur Sejahtera, which is in turn 95% owned by SAJ Industrial Sdn Bhd, which is in turn 100% owned by Jalan Abesin Limited (BVI).

b) 4.9% owned by PT Permata AgroIndo Jaya, which in turn is 99.6% owned by PT Sumatera Panen Utama, which in turn is 50% owned by Mr Ikom Widiasta and 50% by Mr Goh Sudi Wunsen.

c) 0.09% owned by PT Banana Unggul Polatama, which is in turn is 99.98% owned by PT Permata AgroIndo Jaya (see above).

Mr Indra Purnawan (ID Number: 147104091274 0002) is the Commissioner of PT Sawit Sukses Sejati, which is registered at 102c Jalan Pemuda, Tampan, Payung Sekaki, Pekanbaru, Riau.

He is also the Commissioner of the 4 Indonesian holding companies listed above (i.e. PT Sumatera Makmur Sejahtera, Banana Unggul Polatama, PT Sumatera Panen Utama and PT Permata AgroIndo Jaya) - with the last two companies located at the same address as PT Sawit Sukses Sejati.

Identified Group-associated Companies

Mr Indra Purnawan is also the Commissioner of **PT Teguhkarsa Wanalestari**, which is also located at the same address as **PT Sawit Sukses Sejati**.

PT Teguhkarsa Wanalestari - which is included in many traders, biofuel/manufacturers and consumer brand mill lists - is 94% controlled through another British Virgin Islands (BVI) offshore holding company called **Prachinburi Limited**:

a) 5% owned by PT Permata AgroIndo Jaya (see above)

b) 95% by PT Sumatera Rumpun Sejahtera, which is in turn:

i) 0.9% owned by PT Banana Unggul Polatama (see above)

ii) 0.1% owned by PT Permata AgroIndo Jaya (see above)

iii) 99% by SRS Capital Limited (HK), which is in turn 100% owned by Prachinburi Limited (BVI)

PT Sumatera Rumpun Sejahtera and PT Permata AgroIndo Jaya are also located at the same address as PT Sawit Sukses Sejati, with Mr Indra Purnawan being the Commissioner of PT Permata AgroIndo Jaya.

Jalan Abesin Limited (BVI) also owns **PT Usaha Sawit Unggul** (previously highlighted in Rapid Response [report 17](#)) through PT Sumatera Makmur Sejahtera and SAJ Industrial Sdn Bhd. PT Usaha Sawit Unggul is once again clearing forest in the concession. See case highlighted on pages 10-13.

Ownership data and supply chain links (cont.)

Further research has identified additional group companies related to this case that included in many traders, biofuel/manufacturers and consumer brand mill lists (see page 3);

Prachinburi Limited (BVI) also controls **PT Asia Sawit Lestari** and **PT Prima Mas Lestari**, where Mr Indra Purnawan is the Commissioner for both companies.

The ownership is structured as follows:

a) 95% owned by PT Sumatera Selaras Sejahtera, which is in turn owned by:

i) 95.8% owned by SSS Capital Limited (Hong Kong), which is in turn 100% owned by Prachinburi Limited (see above);

ii) 4.178% by PT Permata AgroIndo Jaya (see previous page)

iii) 0.05% by PT Banana Unggul Polatama (see previous page)

b) The remaining 5% is owned by PT Permata AgroIndo Jaya.

Ownership data and supply chain links (cont.)

Other known Supply Chain links

In 2021, the company PT Sawit Sukses Sejati was the third-largest supplier to Sumber Tani Agung Tbk (STA Group), according to the group's [2022 Prospectus](#). In 2021 nearly ~60% of the FFB processed by STA was sourced from [third-party sources](#).

STA Group is in the supply chain of many traders, refineries and consumer brand companies (see page 3).

According to the group's 2021 Prospectus, STA owed PT Sawit Sukses Sejati a total of IDR 6.8 billion (~\$470,000) for the six-month period ending 30 June 2021.

Rincian utang usaha pihak ketiga berdasarkan pemasok adalah sebagai berikut:		The details of trade payables from third parties based on suppliers are as follows:			
	30 Juni 2021/ June 30, 2021	31 Desember/December 31,			
		2020	2019	2018	
PT Anugerah Pupuk Lestari	32.372	-	-	-	PT Anugerah Pupuk Lestari
PT Anugerah Pupuk Makmur	11.932	-	-	-	PT Anugerah Pupuk Makmur
PT Sentana Adidaya Pratama	7.460	1.248	7.309	21.054	PT Sentana Adidaya Pratama
PT Sawit Sukses Sejati	6.822	2.758	-	-	PT Sawit Sukses Sejati
PT Sumber Sawit Makmur	3.431	1.744	1.496	1.483	PT Sumber Sawit Makmur
CV Glona	3.032	1.684	1.421	522	CV Gloria
PT Prima Sauhur Lestari	2.985	-	256	-	PT Prima Sauhur Lestari
PT Mulia Berjaya Abadi	2.333	1.893	393	373	PT Mulia Berjaya Abadi
CV Mitra Lintas Borneo	1.464	1.012	1.655	2.318	CV Mitra Lintas Borneo
PT AKR Corporindo Tbk	787	1.081	2.429	1.338	PT AKR Corporindo Tbk
PT Kalimantan Hampanan Sawit	570	382	2.779	1.107	PT Kalimantan Hampanan Sawit
PT Wilmar Chemical Indonesia	12	1.802	-	2.605	PT Wilmar Chemical Indonesia
PT Agro Tradisi	-	10.371	11.353	1.155	PT Agro Tradisi
Lain-lain (masing-masing di bawah Rp2.000)	51.231	46.474	51.811	46.345	Others (below Rp2,000 each)
Total	124.431	70.449	80.902	78.300	Total

The [consolidated 2021 accounts](#) shows STA owed PT Sawit Sukses Sejati a total of IDR 5.428 billion (~\$374,500) by the end of the 2021 financial year.

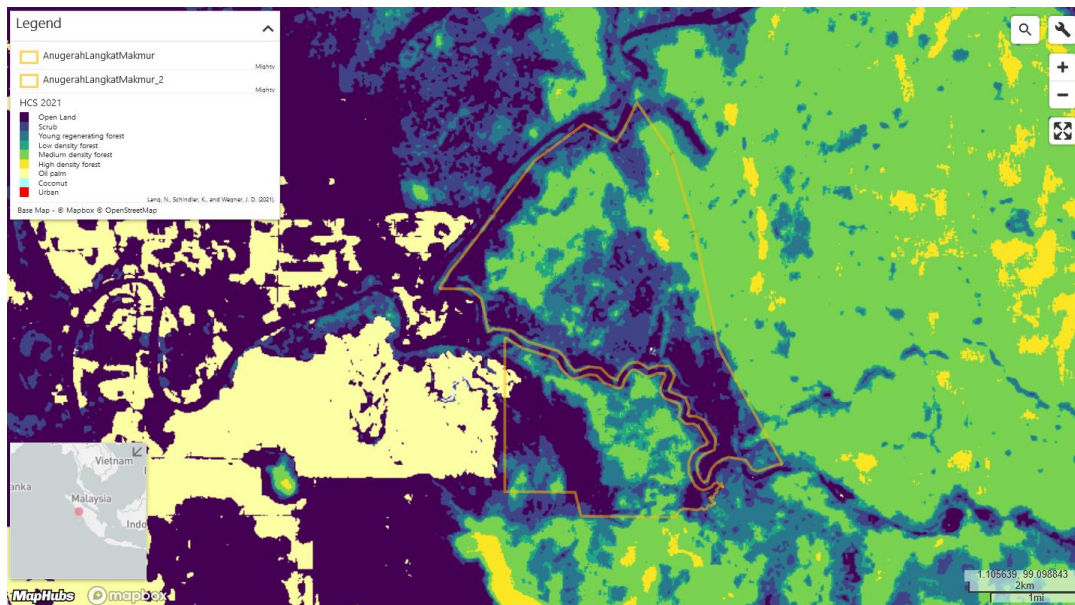
Rincian utang usaha pihak ketiga berdasarkan pemasok adalah sebagai berikut:		The details of trade payables from third parties based on suppliers are as follows:	
	31 Desember 2021/ December 31, 2021	31 Desember 2020/ December 31, 2020	
PT Dupan Anugerah Lestari	28.903	-	PT Dupan Anugerah Lestari
PT Anugerah Pupuk Lestari	10.423	-	PT Anugerah Pupuk Lestari
PT Sawit Sukses Sejati	5.428	2.758	PT Sawit Sukses Sejati
PT Citra Indah Pertiwi	4.376	-	PT Citra Indah Pertiwi
PT Multiagro Sumatera Jaya	3.981	-	PT Multiagro Sumatera Jaya
PT Prima Sauhur Lestari	2.848	-	PT Prima Sauhur Lestari
PT Sumber Sawit Makmur	2.687	1.744	PT Sumber Sawit Makmur
PT AKR Corporindo Tbk	2.597	1.081	PT AKR Corporindo Tbk
PT Yorgo Anugerah Nusantara	2.557	-	PT Yorgo Anugerah Nusantara
KUD Gunung Agung Sawita	2.248	1.222	KUD Gunung Agung Sawita
CV Melati Nababan	2.027	1.134	CV Melati Nababan
PT Indra Angkola Energy	2.003	63	PT Indra Angkola Energy
PT Agro Tradisi	-	10.371	PT Agro Tradisi
Lain-lain (masing-masing di bawah Rp2.000)	60.897	52.076	Others (below Rp2,000 each)
Total	128.953	70.449	Total

Mapping analysis

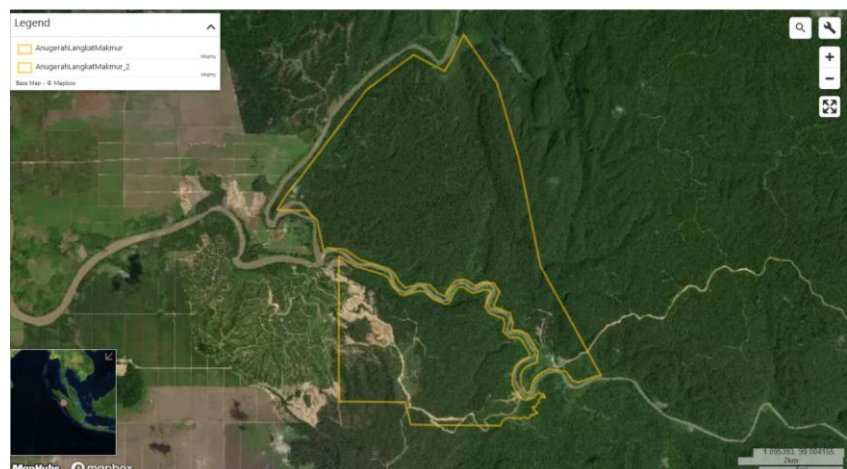


Alert Imagery (before and after satellite images)

The map below shows that the areas within the concession are likely to be High Carbon Stock (HCS) forest, based on the indicative map published by [Lang et al. 2021](#).



The map below shows the quality of forest canopy cover (in the area of forest clearance) prior to plantation development (source: Map Box)



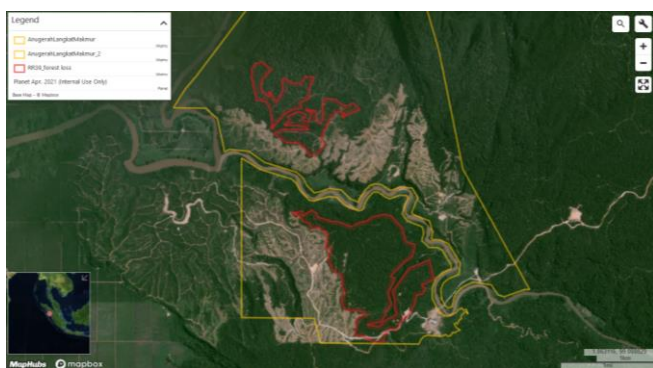
Mapping analysis

Alert Imagery (before and after satellite images)

Clearance location: 1.037677 99.036329

The map below shows the area of forest clearance between April 2021 and March 2022.

Date: April 2021



Date: March 2022

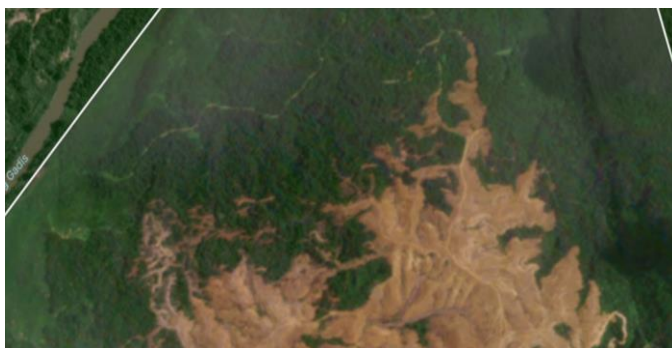


The Planet imagery below shows continued forest clearance in the upper parts of the northern concessions between March 2022 and April 2022.

Date: March 2022



Date: April 2022



New Case

Group: Group associated with PT Teguhkarsa Wanalestari and PT Sawit Sukses Sejati

PT Usaha Sawit Unggul

Concession location: 0.981651 99.069735

Deforestation and/or peat development

Report	Deforestation (ha)	Peat development (ha)	Peat forest development (ha)	Clearance prep/Stacking lines (ha)	Time period
Report 39	~390 (indicative HCS)	-	-	-	April 2021 - March 2022

Satellite imagery (see below) shows that between April 2021 and March 2022 a total of ~390 hectares of forest (indicative HCS) was cleared in the PT Usaha Sawit Unggul concession, based on the HGU boundaries. (Imagery: 2021-2 Planet Labs Inc).

Supply Chain Information

Company/Group	Trader	Biofuel / other manufacturers	Consumer Brand
PT Usaha Sawit Unggul	n/a	n/a	n/a
PT Teguhkarsa Wanalestari (associated with PT Usaha Sawit Unggul/PT Sawit Sukses Sejati/Jalan Abesin Ltd)	AAK, Apical, ADM,BLC, Cargill, COFCO Int, Felda IFFCO, KLK, LDC, Mewah, Musim Mas, Olam, PIL, Sime Darby,	BASF, Lipidos,Neste, Oleon	Colgate Palmolive, Danone, Friesland Campina, Hershey, General Mills, J&J, Kelloggs, L'Oreal, Nestle, P&G, Pepsico, PZ Cussons, Reckitt Benckiser, Unilever, Upfield, Vandemoortele
PT Asia Sawit Lestari (associated with PT Usaha Sawit Unggul/PT Sawit Sukses Sejati/PT Teguhkarsa Wanalestari)	AAK, ADM, Apical, Cargill, COFCO Int, Felda IFFCO, Fuji Oil, KLK, LDC, Mewah, Olam, PIL, Sime Darby, Wilmar	BASF, Lipidos,Neste, Oleon	Danone, Friesland Campina, General Mills, Hershey J&J, Kellogg's, L'Oreal, Mondelez, Nestle, Nisshn Olllio, Pepsico, P&G, PZ Cussons, Reckitt Benckiser, Unilever, Upfield, Vandemoortele
PT Prima Mas Lestari (associated with PT Usaha Sawit Unggul/PT Sawit Sukses Sejati/PT Teguhkarsa Wanalestari)	AAK, ADM, Apical, Cargill, COFCO Int, Felda IFFCO, Fuji Oil, KLK, LDC, Olam, PIL, Sime Darby, Wilmar	BASF, Lipidos,Neste, Oleon	Colgate Palmolive, Danone, Ferrero, Friesland Campina, General Mills, Hershey J&J, Nisshn Olllio, Pepsico, P&G, PZ Cussons, Reckitt Benckiser, Unilever, Upfield, Vandemoortele

Ownership data

As shown in the previous case, Jalan Abesin Limited owns PT Usaha Sawit Unggul through PT Sumatera Makmur Sejahtera and SAJ Industrial Sdn Bhd.

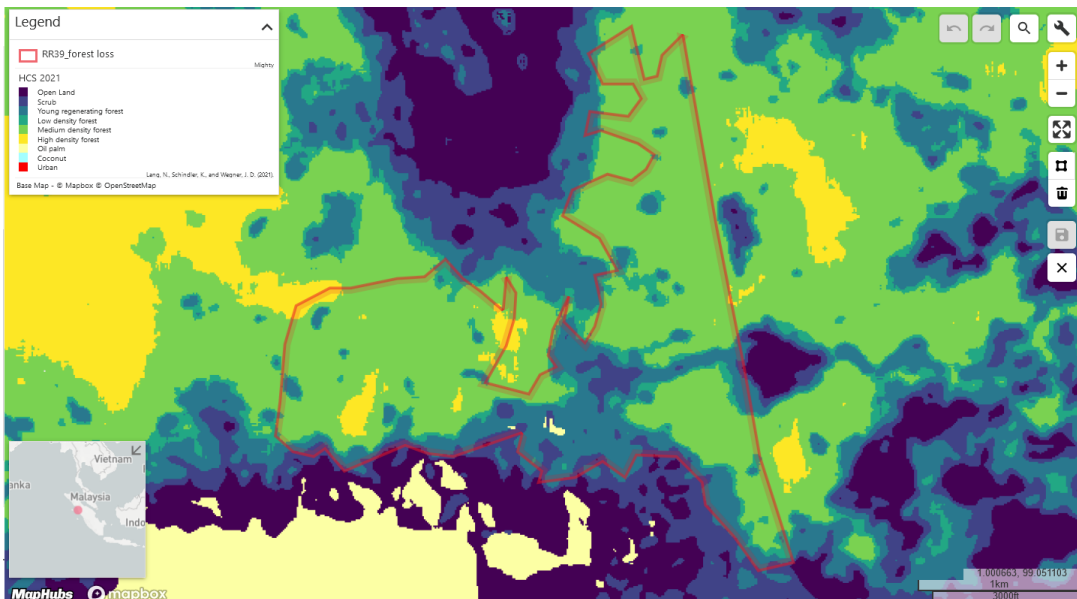
Jalan Abesin Limited subsidiaries are associated with PT Teguhkarsa Wanalestari as described in the Sawit Sukses Sejati case above.

Mapping analysis



Alert Imagery (before and after satellite images)

The map below shows that the areas within the concession are likely to be High Carbon Stock (HCS) forest, based on the indicative map published by [Lang et al. 2021](#)



The map below shows the quality of forest canopy cover (in the area of forest clearance) prior to plantation development (source: Bing)



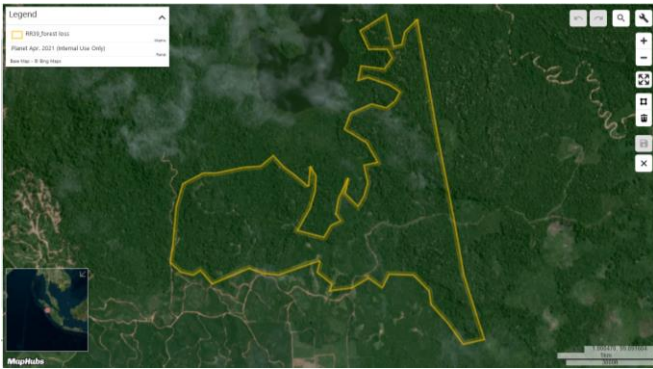
Mapping analysis

Alert Imagery (before and after satellite images)

Clearance location: 0.981651 99.069735

The map below shows the area of forest clearance between April 2021 and March 2022.

Date: April 2021



Date: March 2022

