



MIGHTY EARTH



# RAPID RESPONSE Palm Oil Report

Report 35

August 2021



Prepared with support from

**MapHubs**

**Waxman**

# Table of Contents

## Cases identified using Planet and other spatial imagery

### Indonesian Companies

#### *New Cases*

PT Jhnolin Agro Lestari: Jhonlin Group	3
PT Bumi Sawindo Permai: Bukit Asam	5

### Malaysian Companies

#### *New Cases*

LPF 0010: Ta Ann	7
LPF 0019: Shin Yang	9

## Supply chain information:

Supply chain information included in Rapid Response reports is based on the latest public versions of mill disclosures, recent export data, and company grievance logs. Mighty Earth encourages companies to send updated versions of mill disclosures as soon as they become available and to share any decision to suspend relations with a given group/company listed in those mill disclosures with [rapidresponse@mightyearth.org](mailto:rapidresponse@mightyearth.org).

Mighty Earth is now including biofuel companies and other manufacturers in the supply chain tables of Rapid Response reports, as these companies have both direct and indirect trading relationships with groups highlighted in these reports and should be filing grievances on these cases. These companies are listed in the "Supply Chain Information" tables.

# New Case

## Group: Jhonlin

PT Jhonlin Agro Lestari

Concession location: -3.247384, 115.930973

### Deforestation and/or peat development

Report	Deforestation (ha)	Peat development (ha)	Peat forest development (ha)	Clearance prep/Stacking lines (ha)	Time period
Report 35	38	-	-	-	June-August 2020 - December 2020

Satellite imagery shows that between June-August 2020 and December 2020, a total of 38 hectares of forest were cleared in the PT Jhonlin Agro Lestari concession. (Imagery: 2020-2021 Planet Labs Inc.)

### Supply Chain Information

Company/Group	Traders	Biofuel / other manufacturers	Consumer Brands
PT Jhonlin Agro Lestari			
Jhonlin	AAK, COFCO Int, IFFCO, Sime Darby	Oleon	General Mills, Johnson&Johnson, Kellogg's, L'Oreal, Mondelez, P&G, Pepsico, Reckitt Benckiser, Upfield

### Group Ownership Information

PT Jhonlin Agro Lestari is part of the Jhonlin group.<sup>1</sup>

1. Jhonlin website, [www.jhonlinmagz.com/eas-group-bagikan-paket-semako-di-3-kecamatan-di-kabupaten-kotabaru/](http://www.jhonlinmagz.com/eas-group-bagikan-paket-semako-di-3-kecamatan-di-kabupaten-kotabaru/)

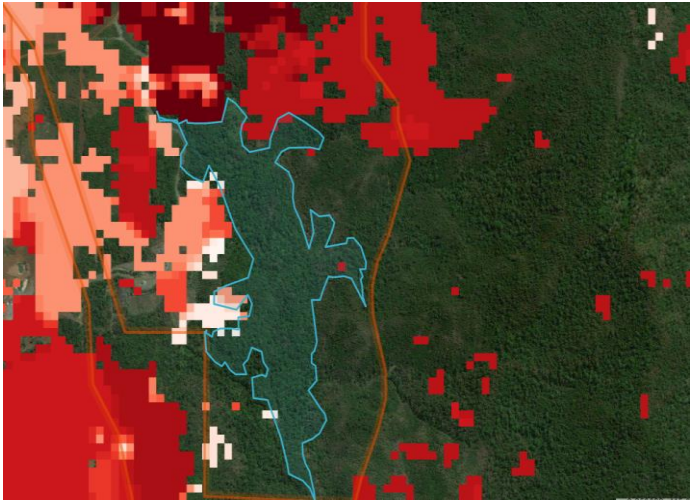
# Mapping analysis



## Alert Imagery (before and after satellite images)

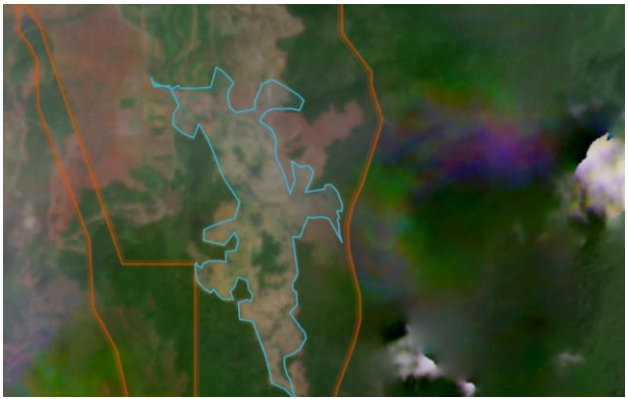
Clearance location: (-3.260293, 115.935634)

Base map: Bing Maps & Tree Cover Loss (red) – source: UMD Global Forest Change 2000-2019



Date: June-August 2020

Date: November 2020



# New Case

## Group: Bukit Asam

PT Bumi Sawindo Permai

Concession location: -3.88852, 103.838945

### Deforestation and/or peat development

Report	Deforestation (ha)	Peat development (ha)	Peat forest development (ha)	Clearance prep/Stacking lines (ha)	Time period
Report 35	16	-	-	-	June-August 2020 - June 2021

Satellite imagery shows that between June-August 2020 and June 2021, a total of 16 hectares of forest were cleared in the PT Bumi Sawindo Permai concession. (Imagery: 2020-2021 Planet Labs Inc.)

### Supply Chain Information

Company/Group	Traders	Biofuel / other manufacturers	Consumer Brands
PT Bumi Sawindo Permai	AAK, ADM, Bunge, Cargill, COFCO Int, Fuji Oil, IOI, KLK, LDC, PIL, Sime Darby, Wilmar	BASF, Neste, Oleon	Colgate Palmolive, Danone, Ferrero, General Mills, Hershey, Johnson& Johnson, Kellogg's, Mondelez, P&G, Pepsico, PZ Cussons, Reckitt Benckiser, Upfield
Bukit Asam	AAK, ADM, Bunge, Cargill, COFCO Int, Fuji Oil, IOI, KLK, LDC, PIL, Sime Darby, Wilmar	BASF, Neste, Oleon	Colgate Palmolive, Danone, Ferrero, General Mills, Hershey, Johnson& Johnson, Kellogg's, Mondelez, P&G, Pepsico, PZ Cussons, Reckitt Benckiser, Upfield

### Group Ownership Information

PT Bumi Sawindo Permai is part of Bukit Asam.<sup>2</sup>

2. Bukit Asam group website: [www.ptba.co.id/en/hrm/ba-acl](http://www.ptba.co.id/en/hrm/ba-acl)

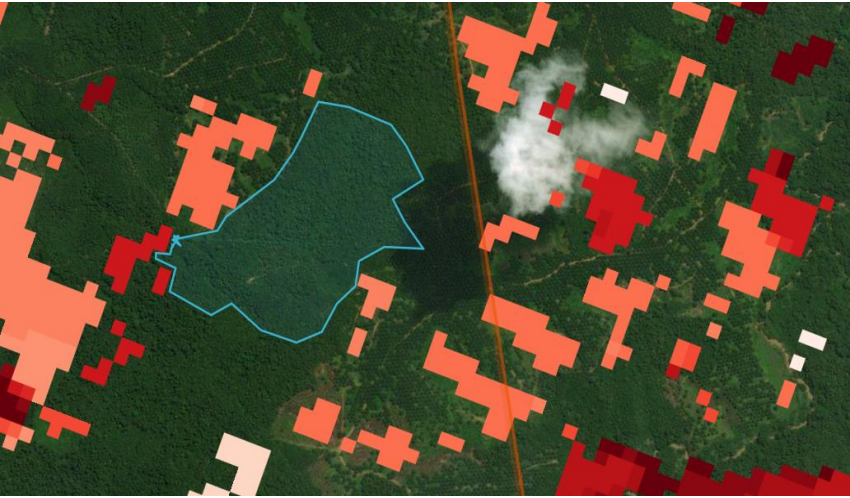
# Mapping analysis



## Alert Imagery (before and after satellite images)

Clearance location: (-3.815303, 103.869927)

Base map: Bing Maps & Tree Cover Loss (red) - source: UMD Global Forest Change 2000-2019



Date: June-August 2020

Date: June 2021



# New Case

## Group: Ta Ann

LPF 0010

Concession location: 1.799300, 112.533066

### Deforestation and/or peat development

Report	Deforestation (ha)	Peat development (ha)	Peat forest development (ha)	Clearance prep/Stacking lines (ha)	Time period
Report 35	10	-	-	-	May 2021 - June 2021

Satellite imagery shows that between May 2021 and June 2021, a total of 10 hectares of forest were cleared in the Ta Ann LPF 0010 concession. (Imagery: 2020-2021 Planet Labs Inc.)

### Supply Chain Information

Company/Group	Traders	Biofuel / other manufacturers	Consumer Brands
Ta Ann	ADM, Bunge, Cargill, COFCO Int, Fuji Oil, IFFCO, IOI, KLK, LDC, Mewah, Olam, PIL, Sime Darby, Wilmar	Neste, Oleon	Danone, Friesland Campina, General Mills, Hershey, Johnson&Johnson, Kellogg's, Nisshin Oillio. P&G, Pepsico, PZ Cussons, Reckitt Benckiser, Upfield, Vandemoortele

### Group Ownership Information

The LPF 0010 concession is held by Tan Ann group.<sup>2</sup>

3. Ta Ann Annual Report 2020, [http://taann.com.my/files/Ta\\_ar\\_2020HR.pdf](http://taann.com.my/files/Ta_ar_2020HR.pdf)

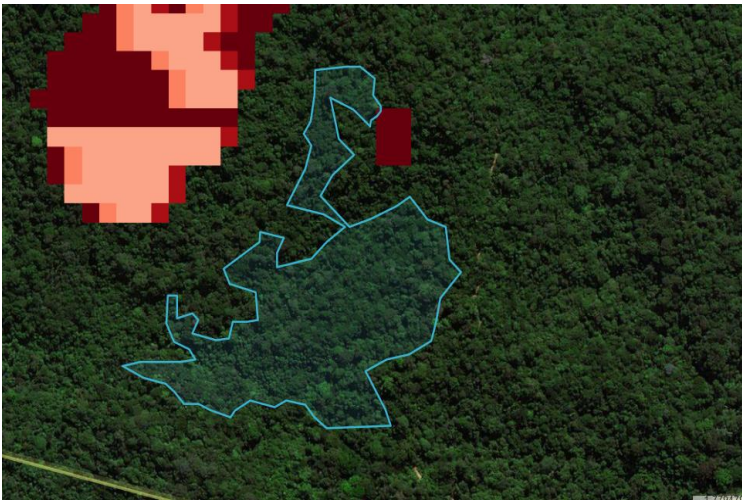
# Mapping analysis



## Alert Imagery (before and after satellite images)

Clearance location: (1.779447, 112.535216)

Base map: Bing Maps & Tree Cover Loss (red)- source: UMD Global Forest Change 2000-2019



Date: May 2021

Date: June 2021





# New Case

## Group: Shin Yang

LPF 0019

Concession location: 2.449308, 112.948889

### Deforestation and/or peat development

Report	Deforestation (ha)	Peat development (ha)	Peat forest development (ha)	Clearance prep/Stacking lines (ha)	Time period
Report 35	~423	-	-	-	Dec 2019/May 2020 - June 2021

Satellite imagery shows that between December 2019/May 2020 and June 2021, a total of ~423 hectares of forest were cleared in the Shin Yang LPF 0019 concession. (Imagery: 2020-2021 Planet Labs Inc.)

### Supply Chain Information

Company/Group	Traders	Biofuel / other manufacturers	Consumer Brands
Shin Yang (via Sarawak Oil Palms Bhd)	Bunge, Cargill, Fuji Oil, KLK, LDC, PIL, Sime Darby, Wilmar	BASF, Lipsa, Neste, Oleon	General Mills, Hershey, Johnson&Johnson, Kellogg's L'Oreal, Nisshin Oillio, P&G, Pepsico, PZ Cussons, Reckitt Benckiser, Unilever, Upfield, Vandermoortele

### Group Ownership Information

The LPF 0019 concession is held by the Shin Yang group.<sup>3</sup>

3. Ta Ann Annual Report 2020, [http://taann.com.my/files/Ta\\_ar\\_2020HR.pdf](http://taann.com.my/files/Ta_ar_2020HR.pdf)

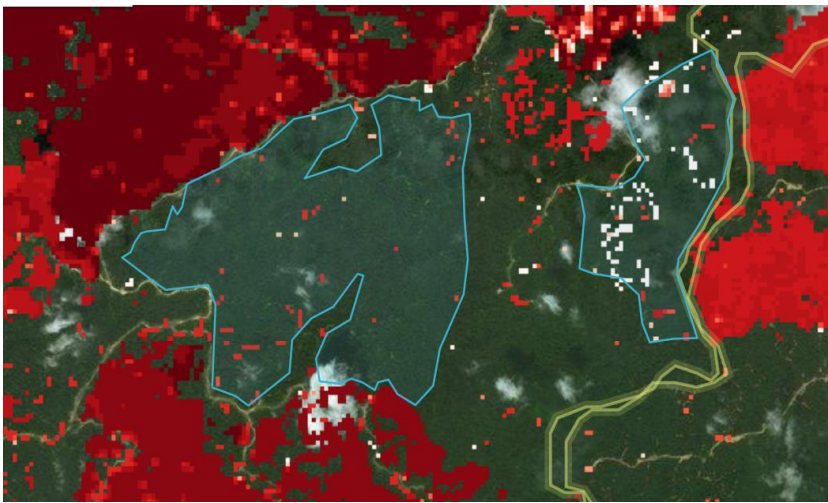
## Mapping analysis



## Alert Imagery (before and after satellite images)

Clearance location: (2.377365, 112.976867)

Base map: Bing Maps & Tree Cover Loss (red) – source: UMD Global Forest Change 2000-2019



Date: Dec 2019-May 2020

Date: June 2021

