



MIGHTY EARTH



# RAPID RESPONSE

## Palm Oil Report

Report 29  
July 2020



Prepared with

**MapHubs**  
**Waxman**

# Table of Contents

## Cases identified using Sentinel imagery

### Indonesian Companies

#### *New Cases*

Parna Raya Group: PT Mitra Andalan Sejahtera 4

#### *Unresolved Cases*

Capitol Group: PT Medco Papua Hijau Selaras 6

Widya Corporation: PT Mulia Inti Perkasa 8

### Sarawak Companies

#### *New Cases*

Rimbunan Hijau: PJP Pelita Lundu Plantation Sdn Bhd 10

#### *Unresolved Cases*

Rimbunan Hijau: Poh Zhen Sdn Bhd 12

## Additional cases identified using filtered GLAD alerts

### New Cases - Unknown Supply Chain Links

Kayu Lapis Indonesia: PT Inti Kebun Lestari Block I 14

PT Az-Zhara Plantation: PT Taringin Perkasa 14

First Borneo Group: PT Borneo International Anugerah 14

Ciptana Group: PT Cipta Papua Plantation Block A 14

### Repeat Cases - Known Supply Chain Links

Mulia Sawit Group: PT Persada Era Agro Kencana 15

NPC Resources Bhd: PT Sumber Alam Selaras 15

Samling Group: PT Tunas Borneo Plantations 15

Shin Yang Group / Sarawak Oil Palms Bhd: Shin Yang LPF 0018 15

### Repeat Cases - Unknown Supply Chain Links

Unknown Group: PT Mentobi Mitra Lestari (formerly owned by PT Bakrie Sumatra Plantations Tbk) 16

First Borneo Group: PT Wahana Hampanan Hijau 16

JSK International Co Ltd (Korea): PT Future Agropia Indonesia 16

Korompis family: PT Berau Karetindo Lestari 16

Salim/IndoGunta: PT Rimbun Sawit Papua 16

Salim/IndoGunta: PT Rimbun Sawit Papua 16

Starmas Sentosa Mandiri: PT Agrindo Sukses Sejahtera 16

Alas Kusuma Group: PT Kusuma Alas Sari 16

Unknown Group: PT Triomas Forestry Department Indonesia 16

# Table of Contents

## Additional cases identified using filtered GLAD alerts (continued)

### Repeat Cases - Unknown Supply Chain Links (continued)

|   |    |
|---|----|
| Salim/IndoGunta: PT Rimbun Sawit Papua                        | 16 |
| Unknown Group: PT Artanusa Agrindo                            | 16 |
| JKS International Co Ltd (Korea): PT Future Agropia Indonesia | 16 |
| Hangzhou Jinjiang Group: PT Putra Sari Lestari                | 16 |
| Unknown Group: PT Sentosa Kalimantan Jaya                     | 16 |
| Bukit Berlian Plantation Group: PT Ginang Fohu Plantation     | 17 |
| Bukit Berlian Plantation Group: PT Ginang Fohu Plantation     | 17 |
| Venture Resources Pte. Ltd: PT Sanggam Harapan Sejahtera      | 17 |
| Kwantas Corporation Bhd: Miracle Harvest Sdn Bhd              | 17 |

### Supply chain information:

Supply chain information included in Rapid Response reports is based on the latest public versions of mill disclosures, recent export data and grievance logs. Mighty Earth encourages companies to send updated versions of mill disclosures as soon as they become available and to share any decision to suspend relations with a given group/company listed in those mill disclosures; please send to [rapidresponse@mightyearth.org](mailto:rapidresponse@mightyearth.org).

Mighty Earth is now including biofuel companies in the supply chain tables of Rapid Response reports, as these companies have both direct and indirect trading relationships with groups highlighted in these reports and should be filing grievances on these cases. These biofuel companies are listed in the "Traders and Biofuel Companies" tables.

# New Case

## Group: Parna Raya

PT Mitra Andalan Sejahtera

Concession location: (0.083410, 109.287645)

### Deforestation and/or peat development

| Report    | Deforestation (ha) | Peat development (ha) | Peat forest development (ha) | Clearance prep/Stacking lines (ha) | Time period                 |
|-----------|--------------------|-----------------------|------------------------------|------------------------------------|-----------------------------|
| Report 29 | 12                 | -                     | -                            | -                                  | July 9, 2019 - June 9, 2020 |

Satellite imagery (see below) shows that between July 9, 2019 and June 9, 2020 a total of 12 hectares of forest was cleared in the PT Mitra Andalan Sejahtera concession. (Imagery: Contains modified Copernicus Sentinel data 2020)

### Supply Chain Information

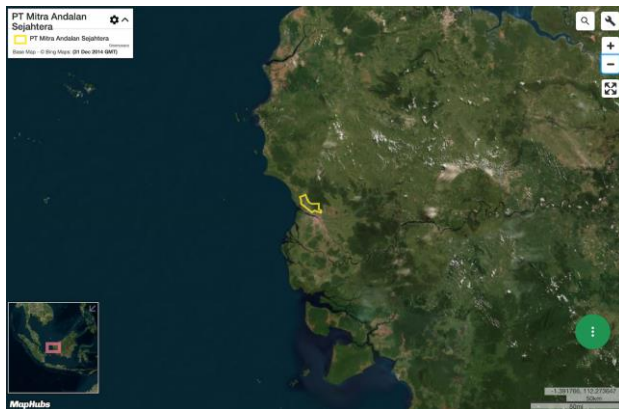
| Company/Group              | Trader               | Biofuel Company | Consumer Brand                      |
|----------------------------|----------------------|-----------------|-------------------------------------|
| PT Mitra Andalan Sejahtera | AAK, Bunge, Fuji Oil | -               | General Mills, Hershey, PepsiCo, RB |
| Parna Raya                 | AAK, Bunge, Fuji Oil | -               | General Mills, Hershey, PepsiCo, RB |

### Ownership Information

PT Mitra Andalan Sejahtera is part of the Parna Raya Group.<sup>1</sup>

1. Parna Raya website, [www.parnaraya.co.id/pro.php?i=perkebunan](http://www.parnaraya.co.id/pro.php?i=perkebunan)

## Mapping analysis



## Alert Imagery (before and after satellite images)

Clearance location: (0.055243, 109.328935)

Date: July 9, 2019



Date: June 9, 2020



# Unresolved Case

## Group: Capitol Group

PT Medco Papua Hijau Selaras

Concession location: (-0.809675, 133.825946)

### Deforestation and/or peat development

| Report    | Deforestation (ha) | Peat development (ha) | Peat forest development (ha) | Clearance prep/Stacking lines (ha) | Time period                          |
|-----------|--------------------|-----------------------|------------------------------|------------------------------------|--------------------------------------|
| Report 25 | 221                | -                     | -                            | 397                                | January 11, 2020 - February 24, 2020 |
| Report 26 | 40 (GLAD)          | -                     | -                            | -                                  | February 17, 2020 - March 16, 2020   |
| Report 27 | 35 (GLAD)          | -                     | -                            | -                                  | March 16, 2020 - April 15, 2020      |
| Report 28 | 31 (GLAD)          | -                     | -                            | -                                  | April 21, 2020 - May 21, 2020        |
| Report 29 | 286                | -                     | -                            | 69                                 | February 24, 2020 - June 18, 2020    |

Satellite imagery (see below) shows that between February 24, 2020 and June 18, 2020 a total of 286 hectares of forest was cleared and 69 hectares were prepared for clearing (stacking lines) in the PT Medco Papua Hijau Selaras concession. (Imagery: Contains modified Copernicus Sentinel data 2020)

### Supply Chain Information

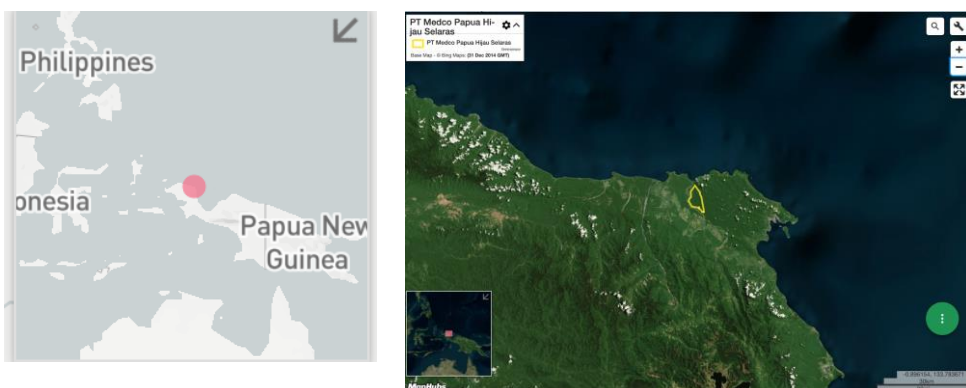
| Company/Group                | Trader   | Biofuel Company | Consumer Brand   |
|------------------------------|--|-----------------|--|
| PT Medco Papua Hijau Selaras | AAK, ADM, Bunge, Fuji Oil, Olam, Sime Darby, Wilmar        | -               | Avon, Colgate-Palmolive, FrieslandCampesina, General Mills, Hershey, Johnson&Johnson, Kellogg, Mars, Mondelez, Nestle, PepsiCo, PZ Cussons, RB         |
| Capitol Group                | AAK, ADM, Bunge, Fuji Oil, Neste, Olam, Sime Darby, Wilmar | -               | Avon, Colgate-Palmolive, Danone, FrieslandCampesina, General Mills, Hershey, Johnson&Johnson, Kellogg, Mars, Mondelez, Nestle, PepsiCo, PZ Cussons, RB |



## Ownership Information

Formerly owned by Medco Agro, PT Medco Papua Hijau Selaras is now part of the Capitol Group.<sup>2</sup> The company is majority owned by PT Yabes Perkebunan Sawit,<sup>3</sup> which is wholly owned by Jimmy Widjaja and Raisa Widjaja, the a son and granddaughter of Eka Tjipta Widjaja (deceased) -- the founder of the Sinar Mas Group. The Sinar Mas Group includes GAR and Asia Pulp & Paper (APP), which both have NDPE policies.

## Mapping analysis

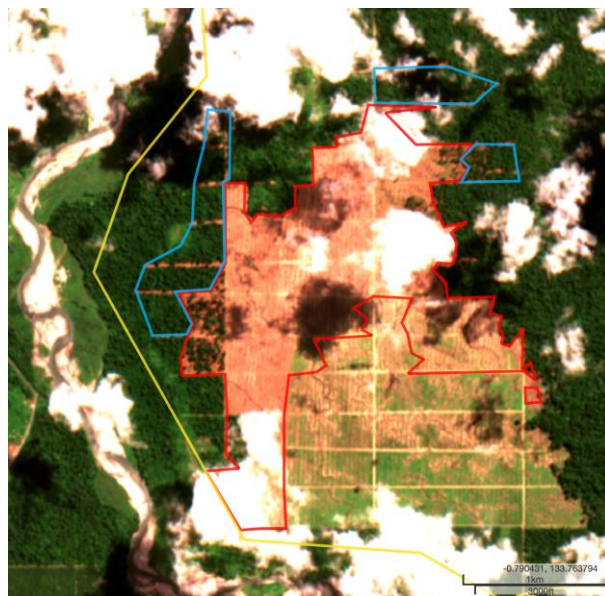
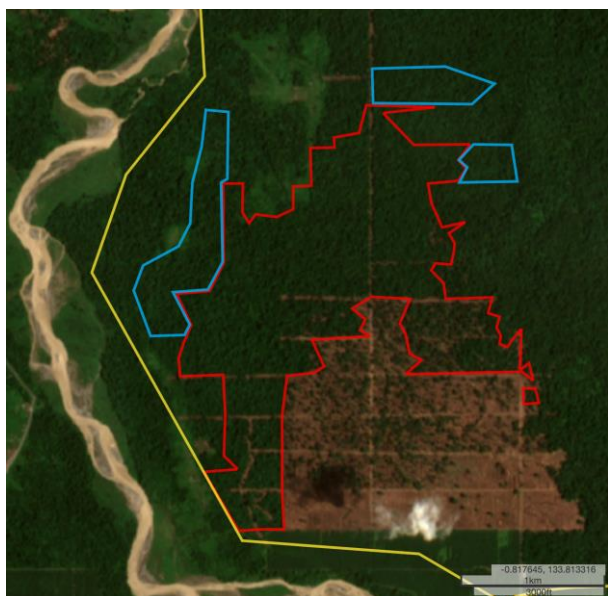


## Alert Imagery (before and after satellite images)

Clearance location: (-0.812069, 133.818092)

Date: February 24, 2020

Date: June 18, 2020



2. Capitol Group website, <http://thecapitolgroups.com>

3. Notary Acts for PT Medcopapua Hijau Selaras and PT Yabes Perkebunan Sawit

# Unresolved Case

## Group: Widya Corporation

PT Mulia Inti Perkasa

Concession location: (2.274158, 116.918204)

### Deforestation and/or peat development

| Report    | Deforestation (ha) | Peat development (ha) | Peat forest development (ha) | Clearance prep/Stacking lines (ha) | Time period                           |
|-----------|--------------------|-----------------------|------------------------------|------------------------------------|---------------------------------------|
| Report 6  | 30                 | -                     | -                            | -                                  | May 11, 2018 - July 19, 2018          |
| Report 15 | 119                | -                     | -                            | 46                                 | April 6, 2019 - May 8 2019            |
| Report 16 | 119 (GLAD)         | -                     | -                            | -                                  | April 19 2019 - May 18, 2019          |
| Report 20 | 71 (GLAD)          | -                     | -                            | -                                  | August 15, 2019 - September 15, 2019  |
| Report 21 | 31 (GLAD)          | -                     | -                            | -                                  | September 16, 2019 - October 15, 2019 |
| Report 22 | 186 (GLAD)         | -                     | -                            | -                                  | October 15, 2019 - November 14, 2019  |
| Report 23 | 74 (GLAD)          | -                     | -                            | -                                  | November 15, 2019 - December 6, 2019  |
| Report 24 | 151 (GLAD)         | -                     | -                            | -                                  | December 15 2019 - January 15, 2020   |
| Report 25 | 1304               | -                     | -                            | -                                  | August 13, 2018 - January 21, 2020    |
| Report 26 | 23 (GLAD)          | -                     | -                            | -                                  | February 17, 2020 - March 16, 2020    |
| Report 27 | 134 (GLAD)         | -                     | -                            | -                                  | March 16, 2020 - April 15, 2020       |
| Report 28 | 50 (GLAD)          | -                     | -                            | -                                  | April 21, 2020-May 21, 2020           |
| Report 29 | 17                 | -                     | -                            | -                                  | March 16, 2020 - June 4, 2020         |

Satellite imagery (see below) shows that between March 16, 2020 and June 4, 2020 a total of 17 hectares of forest was cleared in the PT Mulia Inti Perkasa concession. (Imagery: Contains modified Copernicus Sentinel data 2020)



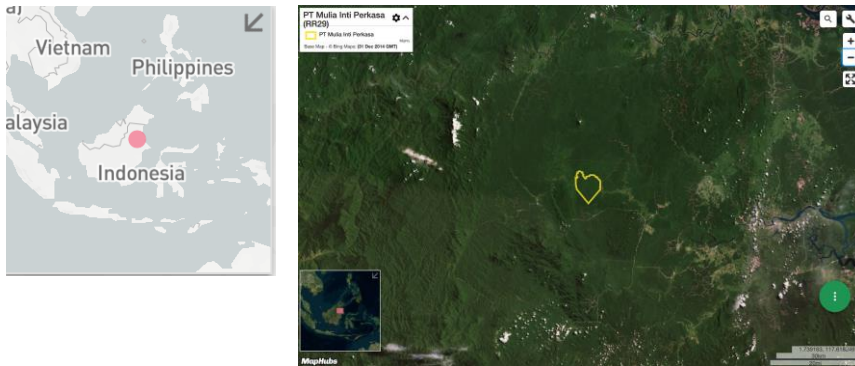
# Supply Chain Information

| Company/Group         | Trader   | Biofuel Company | Consumer Brand   |
|-----------------------|--|-----------------|--|
| PT Mulia Inti Perkasa | Cargill, Fuji Oil, Olam, Sime Darby                            | -               | -  |
| Widya Corporation     | AAK, Astra, Bunge, Cargill, Fuji Oil, Olam, Sime Darby, Wilmar | -               | Avon, Danone, FrieslandCampesina, General Mills, Hershey, Johnson&Johnson, Kellogg, Mars, Nestle, P&G, PepsiCo, PZ Cussons, RB, Unilever |

# Ownership Information

PT Mulia Inti Perkasa is part of the Widya Corporation.<sup>4</sup>

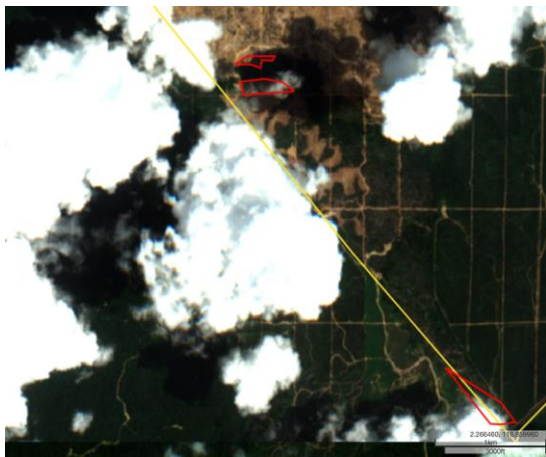
## Mapping analysis



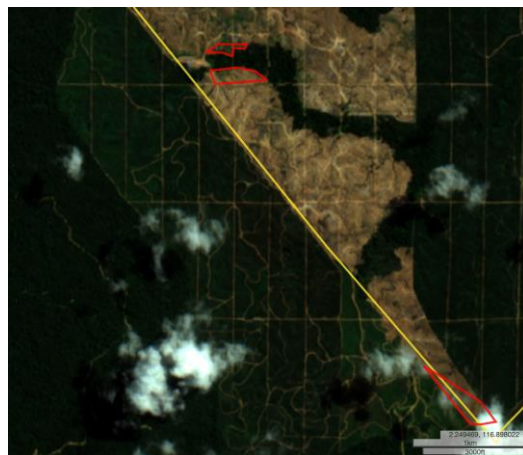
## Alert Imagery (before and after satellite images)

Clearance location: (2.251250, 116.8980514)

Date: March 16, 2020



Date: June 4, 2020



4. See Rapid Response report 6 for ownership details

# New Case

## Group: Rimbunan Hijau

PJP Pelita Lundu Plantation Sdn Bhd

Concession location: (1.520403, 109.828348)

### Deforestation and/or peat development

| Report    | Deforestation (ha) | Peat development (ha) | Peat forest development (ha) | Clearance prep/Stacking lines (ha) | Time period                |
|-----------|--------------------|-----------------------|------------------------------|------------------------------------|----------------------------|
| Report 29 | 4                  | -                     | -                            | -                                  | Feb 11, 2020 - May 6, 2020 |

Satellite imagery (see below) shows that between February 11, 2020 and May 6, 2020 a total of 4 hectares of forest was cleared in the PJP Pelita Lundu Plantation Sdn Bhd concession. (Imagery: Contains modified Copernicus Sentinel data 2020)

### Supply Chain Information

| Company/Group                       | Trader   | Biofuel Company | Consumer Brand   |
|-------------------------------------|--|-----------------|--|
| PJP Pelita Lundu Plantation Sdn Bhd | -  | -               | -  |
| Rimbunan Hijau                      | AAK, ADM, BLD, Bunge, Cargill, Felda IFFCO, Fuji Oil, IOI, KLK, Neste, Sarawak Oil Palm (SOPs), Sime Darby, Wilmar | -               | Avon, Colgate-Palmolive, FrieslandCampesina, General Mills, Hershey, ISF, Johnson&Johnson, Kellogg, Mars, Nestle, P&G, PepsiCo, PZ Cussons, RB, Unilever, Upfield, Vandemoortele |

### Ownership Information

PJP Pelita Lundu Plantation Sdn Bhd is part of the Rimbunan Hijau Group.<sup>5</sup>

5. Rimbunan Hijau website, [www.rsb.com.my/our\\_milestones.html](http://www.rsb.com.my/our_milestones.html)

## Mapping analysis



## Alert Imagery (before and after satellite images)

Clearance location: (1.520403, 109.828348)

Date: February 11, 2020



Date: May 6, 2020



# Unresolved Case

## Group: Rimbunan Hijau

Poh Zhen Sdn Bhd

Concession location: (2.676323, 111.346419)

### Deforestation and/or peat development

| Report    | Deforestation (ha) | Peat development (ha) | Peat forest development (ha) | Clearance prep/Stacking lines (ha) | Time period                          |
|-----------|--------------------|-----------------------|------------------------------|------------------------------------|--------------------------------------|
| Report 17 | -                  | 40                    | -                            | -                                  | March 12, 2019 - July 7, 2019        |
| Report 19 | 7 (GLAD)           | -                     | -                            | -                                  | July 15, 2019 - August 15, 2019      |
| Report 20 | 31 (GLAD)          | -                     | -                            | -                                  | August 15, 2019 - September 15, 2019 |
| Report 26 | 8 (GLAD)           | -                     | -                            | -                                  | February 17, 2020 - March 16, 2020   |
| Report 27 | 7 (GLAD)           | -                     | -                            | -                                  | March 16, 2020 - April 15, 2020      |
| Report 29 | -                  | 66                    | -                            | 54                                 | July 31, 2019 - May 26, 2020         |

Satellite imagery (see below) shows that between July 31, 2019 and May 26, 2020 a total of 66 hectares of peat was developed and 54 hectares were prepared for clearing (stacking lines) in the Poh Zhen Sdn Bhd concession. (Imagery: Contains modified Copernicus Sentinel data 2020)

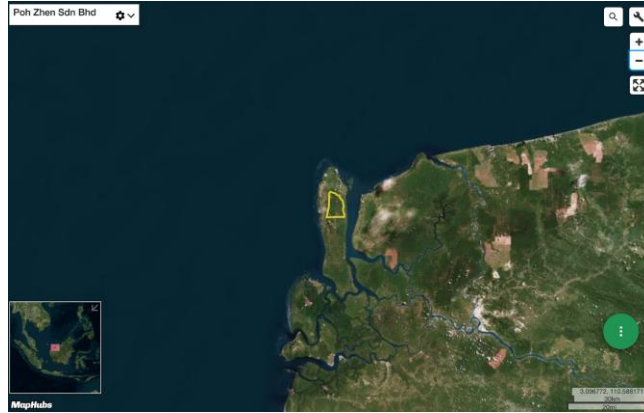
### Supply Chain Information

| Company/Group    | Trader   | Biofuel Company | Consumer Brand   |
|------------------|--|-----------------|--|
| Poh Zhen Sdn Bhd | ADM, BLD, KLK, Sime Darby  | -               | -  |
| Rimbunan Hijau   | AAK, ADM, Astra, BLD Bunge, Cargill, Felda IFFCO, Fuji Oil, IOI, KLK, Neste, Sarawak Oil Palm (SOPs), Sime Darby, Wilmar | -               | Avon, Colgate-Palmolive, FrieslandCampesina, General Mills, Hershey, ISF, Johnson&Johnson, Kellogg, Mars, Nestle, P&G, PepsiCo, PZ Cussons, RB, Unilever, Upfield, Vandemoortele |

## Ownership Information

Poh Zhen Sdn Bhd is a wholly owned subsidiary of Jaya Tiasa Bhd, part of the Rimbunan Hijau Group.<sup>6</sup>

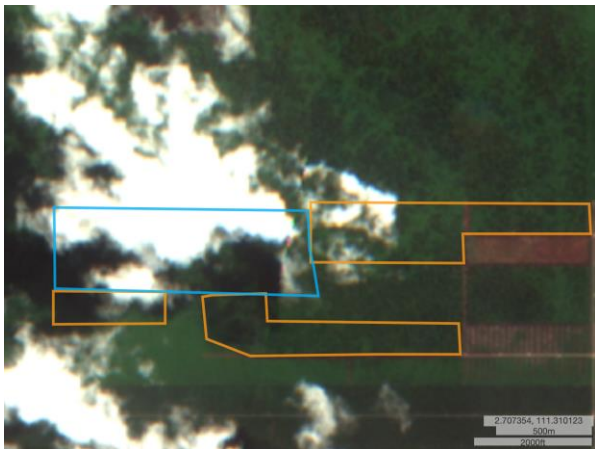
## Mapping analysis



## Alert Imagery (before and after satellite images)

Clearance location: (2.684481, 111.339182)  
Date: July 31, 2019

Date: May 26, 2020



6. Company profile from Companies Commission Malaysia

## Additional cases identified using screened GLAD alerts

The following cases have been identified through screened GLAD alerts (see methodology below). As these cases are either repeat cases from previous Rapid Response reports or where Mighty Earth did not determine any supply chain links for these concessions/groups, no satellite image analysis was conducted for these cases to save resources.

**Mighty Earth expects that palm oil traders and biofuel companies conduct their own satellite image analysis of these cases and, if confirmed to be deforestation/peatland development, conduct due diligence to determine if they are exposed to associated companies/groups.**

### Methodology:

For Indonesia, GLAD alerts are screened using the Indonesia Ministry of Forestry and the Environment land cover dataset for 2017 which classifies existing palm oil plantations and primary and secondary forest. Hence, only GLAD alerts in primary and secondary forest according to that dataset are included.

For Malaysia, GLAD alerts are screened to exclude known plantation areas using the Global Forest Watch (GFW) plantations dataset. This automatically eliminates the most common false positives, i.e. the replanting of palm that existed prior to the year 2000.

| New Cases - Unknown Supply Chain Links |                        |   |                            |
|--|------------------------|---|----------------------------|
| Concession license area                | Group/ownership        | Area covered by screened GLAD alerts (ha) | Time period                |
| PT Inti Kebun Lestari Block I          | Kayu Lapis Indonesia   | 10  | May 15, 2020-June 14, 2020 |
| PT Taringin Perkasa                    | PT Az-Zhara Plantation | 9   | May 15, 2020-June 14, 2020 |
| PT Borneo International Anugerah       | First Borneo Group     | 9   | May 15, 2020-June 14, 2020 |
| PT Cipta Papua Plantation Block A      | Ciptana Group          | 7   | May 15, 2020-June 14, 2020 |



## Repeat Cases - Known Supply Chain Links

| Concession license area     | Group/ownership                         | Area covered by screened GLAD alerts (ha) | Time period                    | Rapid Response reports related to each case*                          |
|-----------------------------|---|---|--------------------------------|---|
| PT Persada Era Agro Kencana | Mulia Sawit Group                       | 10  | May 15, 2020-<br>June 14, 2020 | Reports 9, 10, 11, 12, 15, 16, 17, 18, 19, 20, 22, 23, 24, 25, 27, 28 |
| PT Sumber Alam Selaras      | NPC Resources Bhd                       | 6   | May 15, 2020-<br>June 14, 2020 | Reports 23, 25, 26, 27  |
| PT Tunas Borneo Plantations | Samling Group                           | 4   | May 15, 2020-<br>June 14, 2020 | Reports 18, 27, 28  |
| Shin Yang LPF 0018          | Shin Yang Group / Sarawak Oil Palms Bhd | 10  | May 15, 2020-<br>June 14, 2020 | Reports 15, 18, 19, 20, 21, 25, 26, 27                                |

\*Rapid Response reports available on Mighty Earth's Rapid Response website page, [linked here](#).

## Repeat Cases - Unknown Supply Chain Links

| Concession license area                   | Group/ownership  | Area covered by screened GLAD alerts (ha) | Time period                | Rapid Response reports related to each case*          |
|---|--|---|----------------------------|---|
| PT Menthobi Mitra Lestari                 | Unknown Group (PT MML formerly owned by PT Bakrie Sumatra Plantations Tbk) | 137                                       | May 15, 2020-June 14, 2020 | Reports 16, 17, 20, 22, 27                            |
| PT Wahana Hamparan Hijau                  | First Borneo Group   | 103                                       | May 15, 2020-June 14, 2020 | Reports 17, 18, 19                                    |
| PT Future Agropia Indonesia               | JSK International Co Ltd (Korea)   | 71  | May 15, 2020-June 14, 2020 | Reports 17, 20, 27                                    |
| PT Berau Karetindo Lestari                | Korompis family  | 45  | May 15, 2020-June 14, 2020 | Reports 2, 6, 9, 15, 16, 19, 20, 21, 22, 27, 28       |
| PT Rimbun Sawit Papua                     | Salim/IndoGunta  | 42  | May 15, 2020-June 14, 2020 | Reports 3, 10, 13, 14, 16, 17, 18, 20, 23, 25, 26, 28 |
| PT Rimbun Sawit Papua                     | Salim/IndoGunta  | 38  | May 15, 2020-June 14, 2020 | Reports 3, 10, 13, 14, 16, 17, 18, 20, 23, 25, 26, 28 |
| PT Agrindo Sukses Sejahtera               | Starmas Sentosa Mandiri  | 23  | May 15, 2020-June 14, 2020 | Reports 8, 16, 22, 26, 27, 28                         |
| PT Kusuma Alam Sari                       | Alas Kusuma Group  | 15  | May 15, 2020-June 14, 2020 | Reports 7, 17, 23, 26, 28                             |
| PT Triomas Forestry Development Indonesia | Unknown Group  | 15  | May 15, 2020-June 14, 2020 | Reports 17, 22, 23, 24, 27                            |
| PT Rimbun Sawit Papua                     | Salim/IndoGunta  | 13  | May 15, 2020-June 14, 2020 | Reports 3, 10, 13, 14, 16, 17, 18, 20, 23, 25, 26, 28 |
| PT Artanusa Agrindo                       | Unknown Group  | 11  | May 15, 2020-June 14, 2020 | Reports 18, 19, 21, 28                                |
| PT Future Agropia Indonesia               | JSK International Co Ltd (Korea)   | 10  | May 15, 2020-June 14, 2020 | Reports 17, 20, 27                                    |
| PT Putra Sari Lestari                     | Hangzhou Jinjiang Group  | 7   | May 15, 2020-June 14, 2020 | Reports 22 and 23                                     |
| PT Sentosa Kalimantan Jaya                | Unknown Group  | 6   | May 15, 2020-June 14, 2020 | Reports 21 and 23                                     |

\*Rapid Response reports available on Mighty Earth's Rapid Response website page, [linked here](#).

## Repeat Cases - Unknown Supply Chain Links

| Concession license area      | Group/ownership                | Area covered by screened GLAD alerts (ha) | Time period                | Rapid Response reports related to each case* |
|------------------------------|--------------------------------|---|----------------------------|--|
| PT Ginang Fohu Plantation    | Bukit Berlian Plantation Group | 6   | May 15, 2020-June 14, 2020 | Reports 17, 23, 28                           |
| PT Ginang Fohu Plantation    | Bukit Berlian Plantation Group | 4   | May 15, 2020-June 14, 2020 | Reports 17, 23, 28                           |
| PT Sanggam Harapan Sejahtera | Venture Resources Pte. Ltd     | 3   | May 15, 2020-June 14, 2020 | Reports 8, 22, 24                            |
| Miracle Harvest Sdn Bhd      | Kwantas Corporation Bhd        | 5   | May 15, 2020-June 14, 2020 | Reports 20 and 21                            |

\*Rapid Response reports available on Mighty Earth's Rapid Response website page, [linked here](#).