



MIGHTY EARTH

# Mighty Earth Rapid Response Report 2

PT Berau Karetindo Lestari, PT Rimba Karya Rayatama, PT Harapan Rimba Raya,  
and PT Simpi Indai

**December 2017**

Prepared with support from Aidenvironment and MapHubs

---

<b>PT Berau Karetindo Lestari</b>	<b>3</b>
Concession Information	3
Deforestation	3
Alert Overview	3
Alert Imagery	4
Ownership Information	5
Supply Chain Information	6
<b>PT Rayatama Jaya (Ex. Rimba Karya Rayatama)</b>	<b>7</b>
Concession Information	7
Deforestation	7
Alert Overview	7
Alert Imagery	8
Ownership Information	9
Supply Chain Information	10
<b>PT Harapan Rimba Jaya</b>	<b>11</b>
Concession Information	11
Deforestation	11
Alert Overview	11
Alert Imagery	12
Ownership Information	14
Supply Chain Information	15
<b>PT Duta Rendra Mulya and PT Sawit Khatulistiwa Lestari (ex PT Simpi Indai)</b>	<b>16</b>
Concession Information	16
Deforestation	16
Alert Overview	16
Alert Imagery	17
Ownership Information	18
Supply Chain Information	19

## PT Berau Karetindo Lestari

### Concession Information

PT Berau Karetindo Lestari (PT BKL) is located in East Kalimantan, Berau district. Based on the 2016 IUP permit it covers an area of 7,141 hectares.

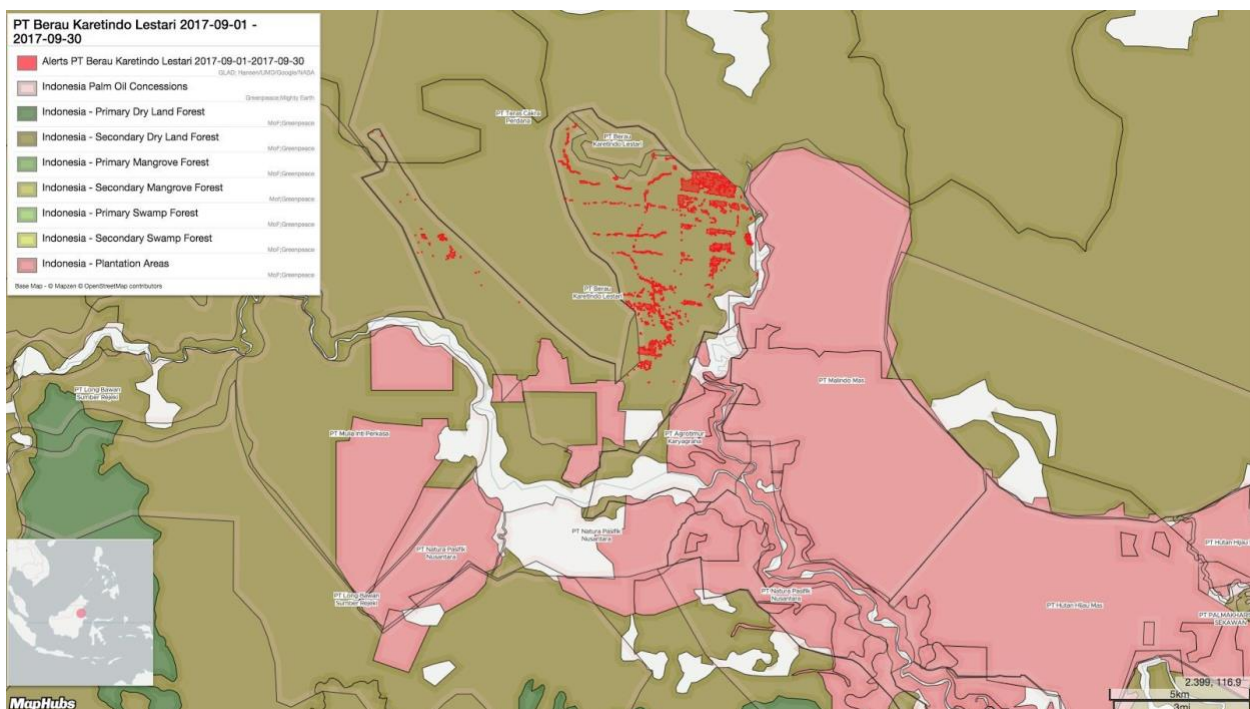
Latitude: 2.323760 Longitude: 116.984128



### Deforestation

From January 2016 to November 2017, PT BKL cleared 1,490 hectares of forest. Planet imagery shows new roads and thinning suggesting clearance is on-going.

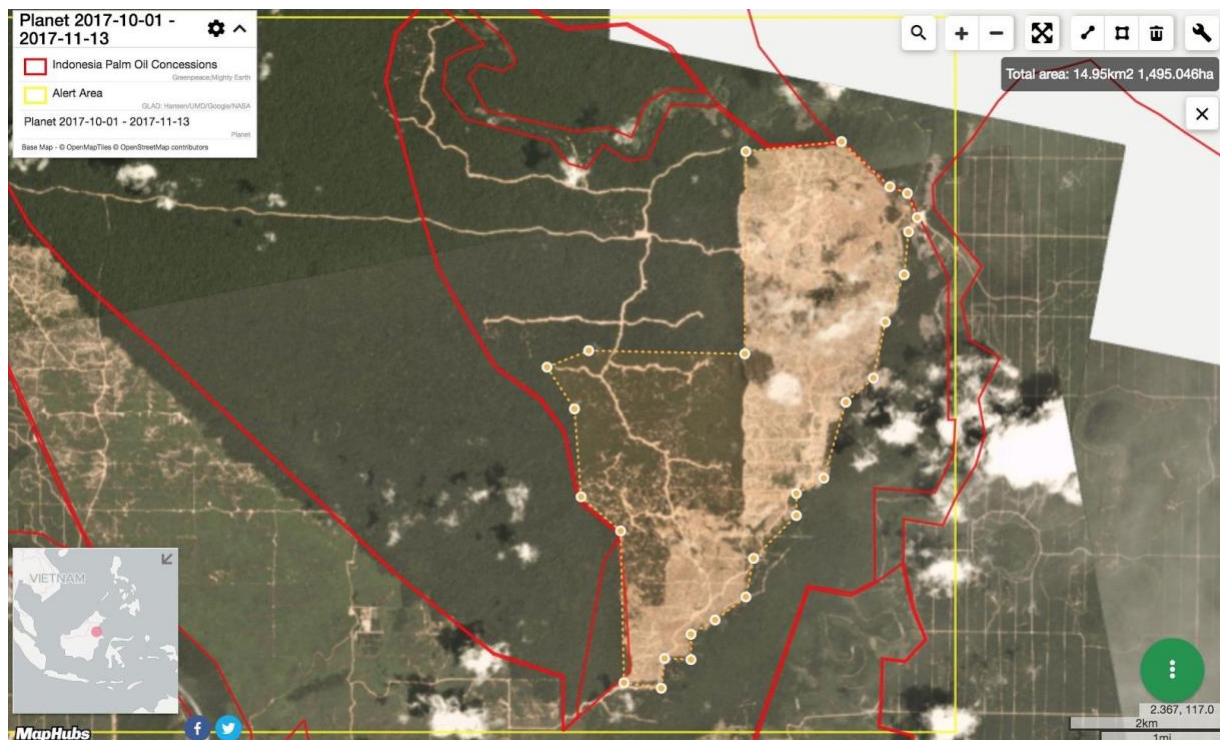
### Alert Overview



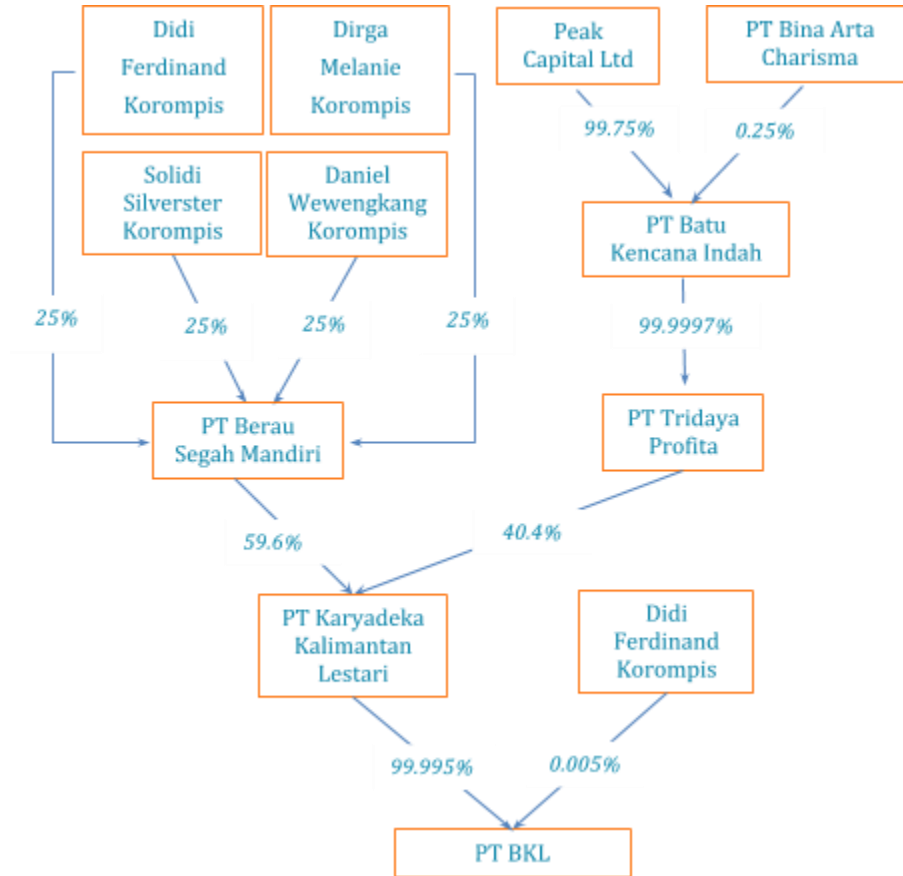
<https://mighty.maphubs.com/map/share/rJSr00pHzG/#11.94/2.3182/116.9818>



## Alert Imagery



## Ownership Information



PT Berau Karetindo Lestari is ultimately owned by the Korompis family and by Peak Capital Pte Ltd, a Singaporean based company owned by Flamire Holdings Limited (registered in the British Virgin Islands).

Both Daniel Wewengkang and Didi Ferdinand Korompis are listed in the Panama Papers for their registered assets in the British Virgin Islands. Their company, Solidi Silvester Korompis is also listed in the BVI ([bit.ly/2C4MVh5](http://bit.ly/2C4MVh5)).

Identity	Ownership	Position
----------	-----------	----------

---

Daniel Wewengkang Korompis	0,005%	Commissionner
Didi Ferdinand Korompis	-	Director
Dirga Melanie Korompis	-	President director
Naik Henokh Parmenas	-	Director
Ferdinand Aryanto	-	President commissioner

### Supply Chain Information

Not Available

## PT Rayatama Jaya (Ex. Rimba Karya Rayatama)

### Concession Information

PT Rayatama Jaya (PT RJ) is located in East Kalimantan, Kutai Barat district. Based on the 2016 IUP permit, it covers an area of 3,912 hectares.

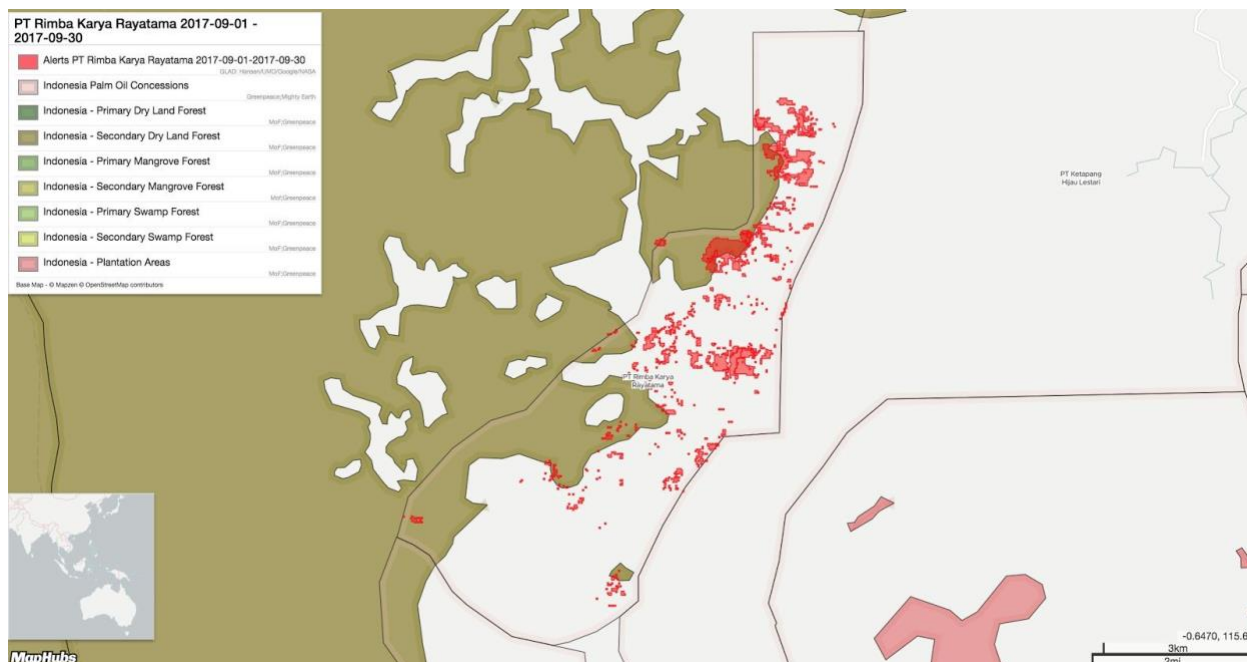
Latitude: -0.598296 Longitude: 115.462580



### Deforestation

From March to November 2017, PT RJ cleared 240 hectares of forest. There has been 900 ha of clearance since August 2016. Newer imagery is cloudy but suggests clearance is ongoing and is expanding to the north.

### Alert Overview



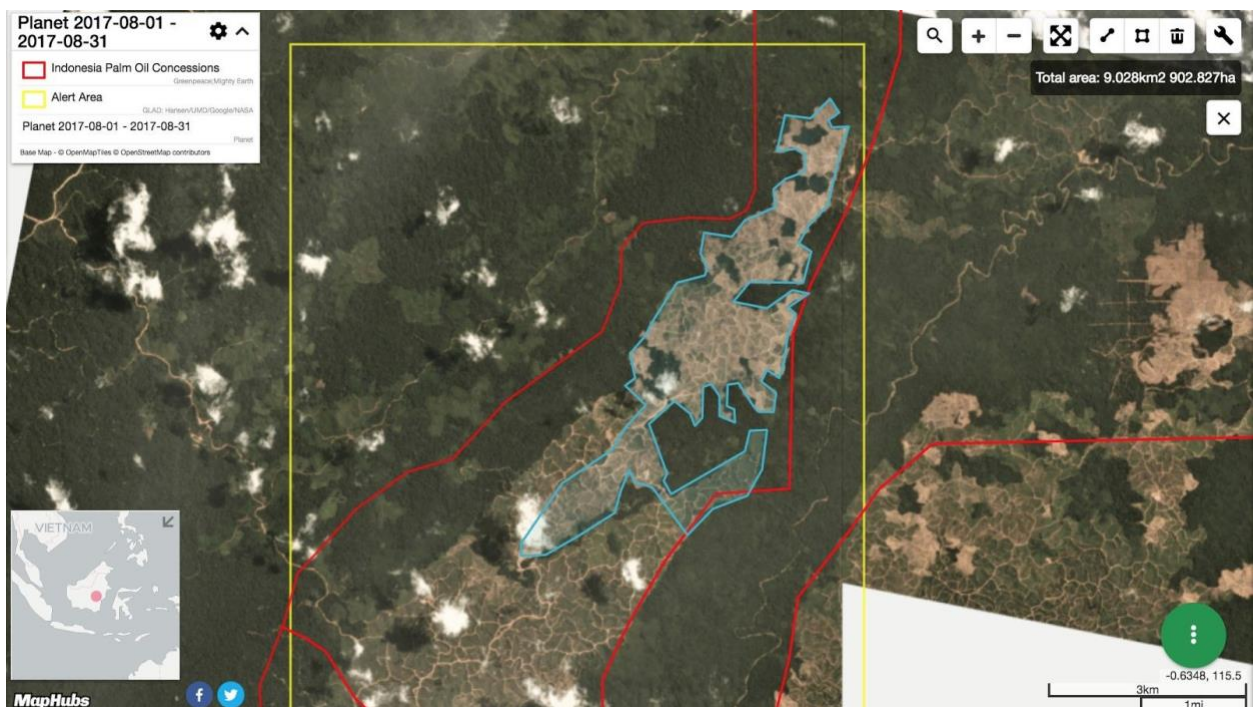
<https://mighty.maphubs.com/map/share/H1S-WkRSGG>



## Alert Imagery

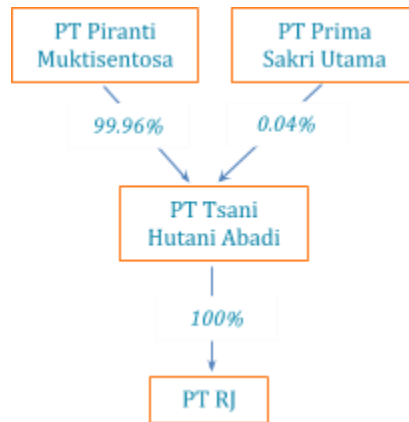


Nov 7, 2017





## Ownership Information



PT Rayatama Jaya is a subsidiary of Tsani Hutani Abadi Group, ultimately owned by Centrino Investment Ltd, registered in Labuan Island.

Tsani Hutani Abadi also owns two other plantation companies in Kutai Barat, namely PT Harapan Rimba Jaya and PT Kruing Lestari Jaya.

Tsani Hutani Abadi's president director, Mulyawan Tjandra, is an ex-executive director of Indo Agri Resources ([bit.ly/2BSUbyy](https://bit.ly/2BSUbyy)).

Identity	Ownership	Position
Theresia Triasih Djunaidi	-	Commissionner
Gunawan Kosasih	-	Director
Rubbyanto	-	President commissioner
Mulyawan Tjandra	-	President director
Tatang Firdaus	-	Director

---

## Supply Chain Information

Not Available

## PT Harapan Rimba Jaya

### Concession Information

PT Harapan Rimba Jaya (PT HRJ) is located in East Kalimantan, Kutai Barat district. Based on the 2016 IUP permit it covers an area of 11,717 hectares.

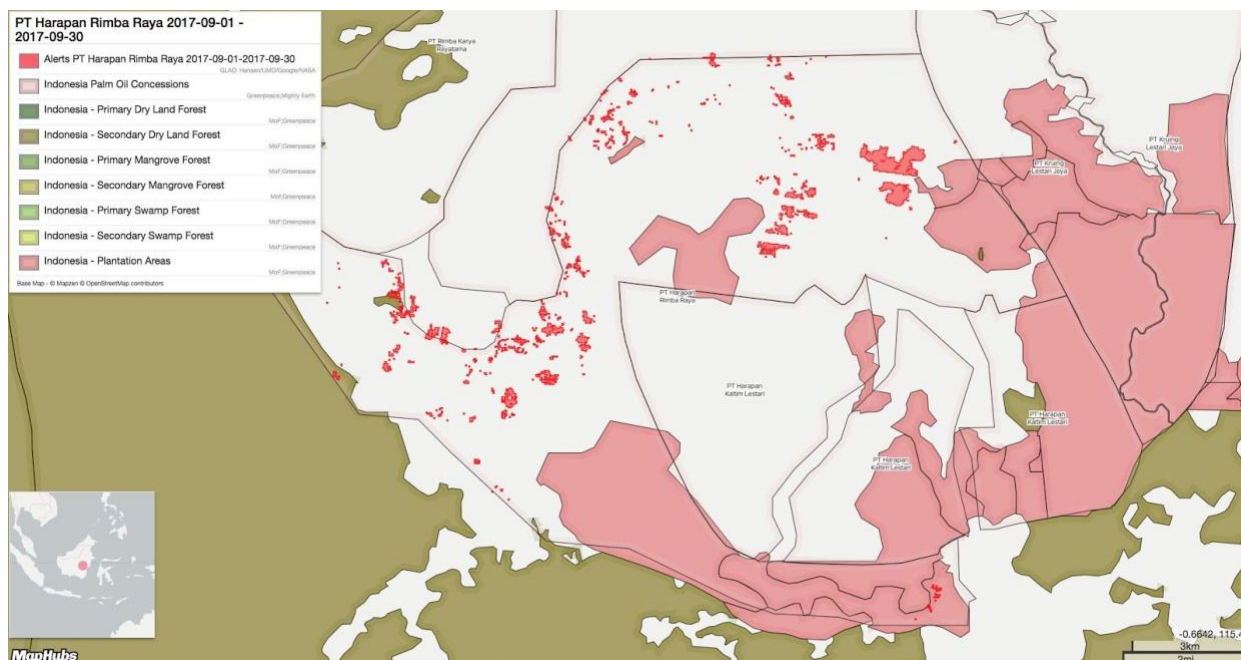
Latitude: -0.663915 Longitude: 115.524881



### Deforestation

From March to November 2017, PT HRJ cleared 707 hectares of forest. Over 7,000 ha has been cleared since 2013.

### Alert Overview



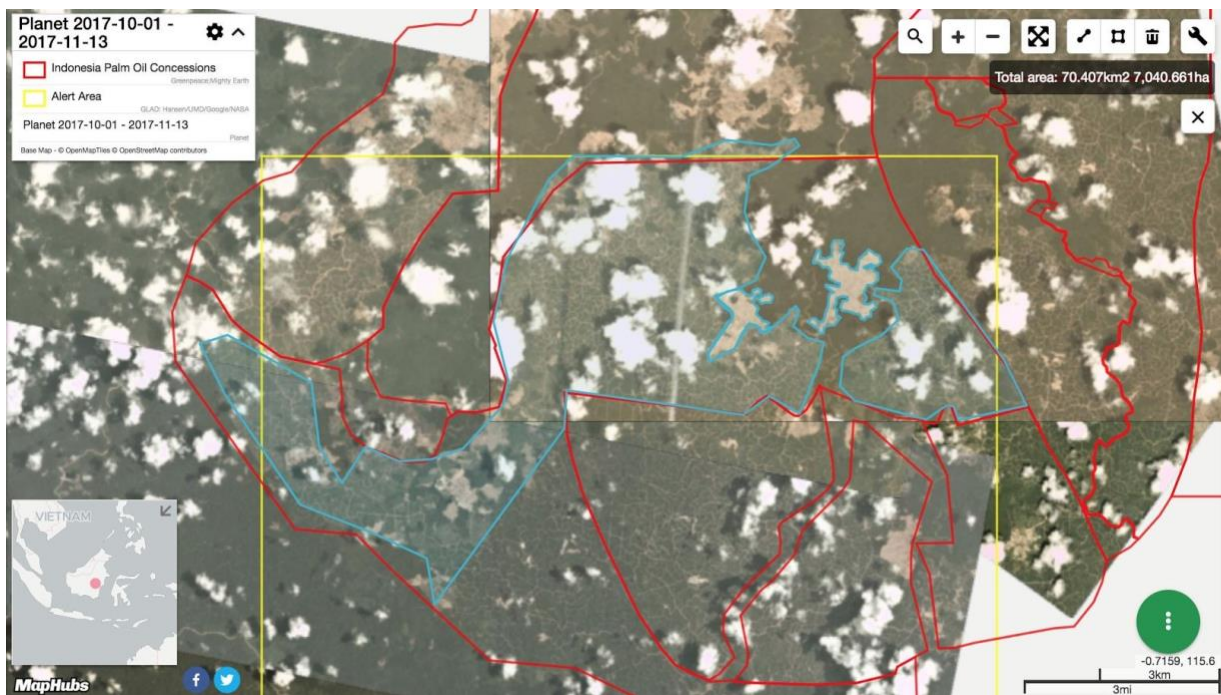
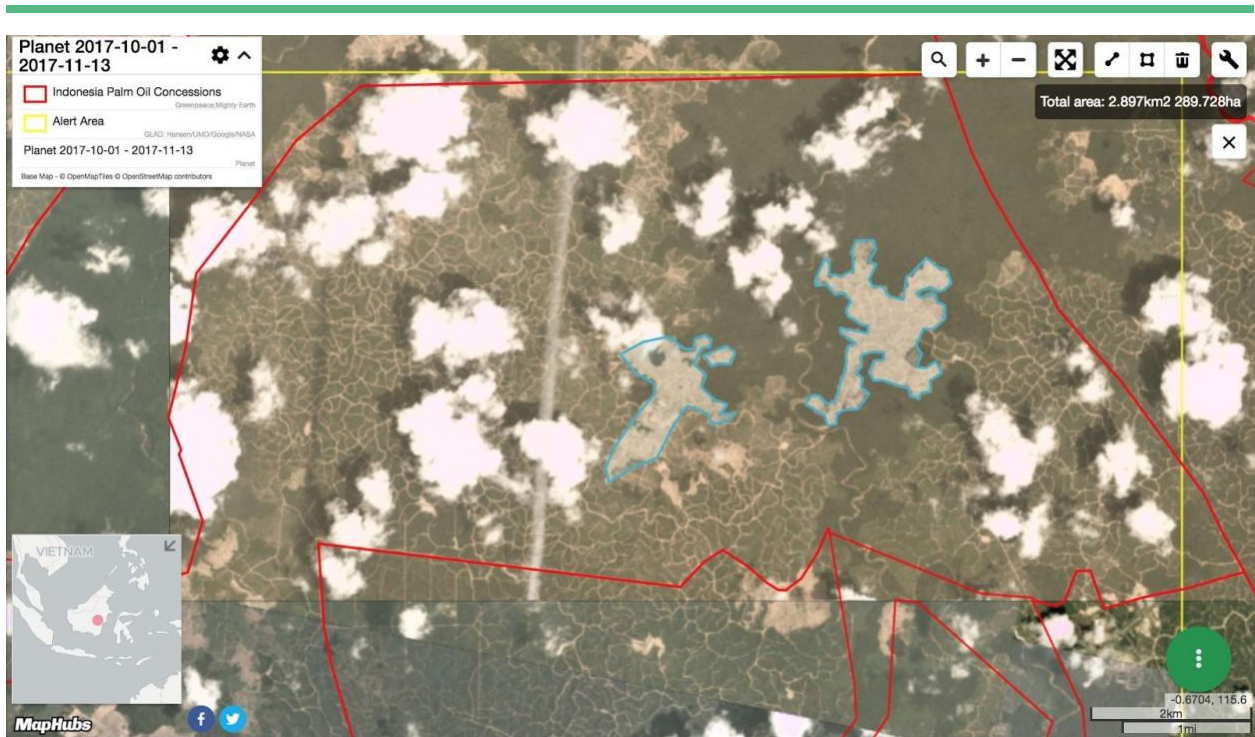
<https://mighty.maphubs.com/map/share/BJSRRAaHfG>



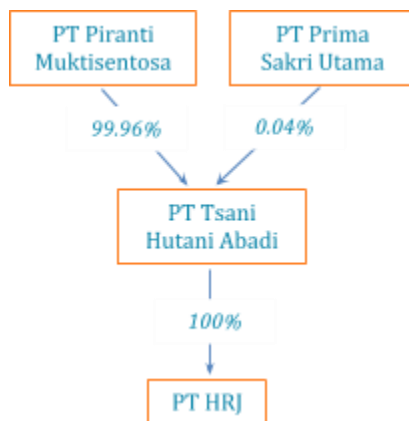
---

## Alert Imagery





## Ownership Information



PT Harapan Rimba Jaya is a subsidiary of Tsani Hutani Abadi Group, ultimately owned by Centрино Investment Ltd, registered in Labuan Island.

Tsani Hutani Abadi also owns two other plantation companies in Kutai Barat, namely PT Rayatama Jaya and PT Kruing Lestari Jaya.

Tsani Hutani Abadi's president director, Mulyawan Tjandra, is an ex-executive director of Indo Agri Resources ([bit.ly/2BSUbyy](http://bit.ly/2BSUbyy)).

Identity	Ownership	Position
Theresia Triasih Djunaidi	-	Commissioner
Gunawan Kosasih	-	Director
Rubbyanto	-	President commissioner
Mulyawan Tjandra	-	President director

---

Tatang Firdaus	-	Director
----------------	---	----------

## Supply Chain Information

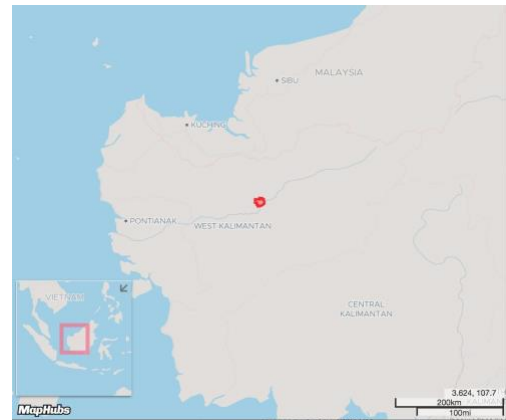
Not Available

## PT Duta Rendra Mulya and PT Sawit Khatulistiwa Lestari (ex PT Simpi Indai)

### Concession Information

The previously PT Simpi Indai concession is now divided in two plantations: PT Duta Rendra Mulya (PT DRM) and PT Sawit Khatulistiwa Lestari (PT SKL), located in West Kalimantan, Ketungau district. Based on the 2015 IUP permit they cover respectively an area of 7,364 and 12,151 hectares.

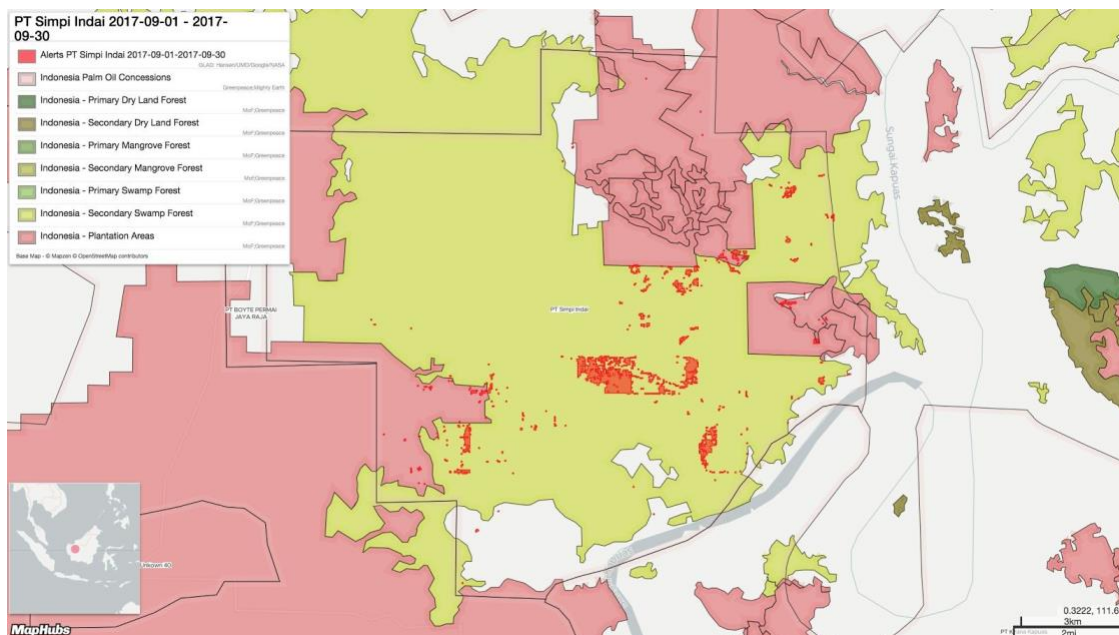
Latitude: 0.275586 Longitude: 111.566634



### Deforestation

From October 2016 to October 2017, PT DRM cleared 772 hectares of peat forest (721 ha), forest (18 ha) and peat (33 ha). PT SKL cleared 1,189 hectares of peat forest (1,166 ha) and peat (23 ha). The total deforestation for those two plantation companies amounts to 1,961 hectares for that period of time.

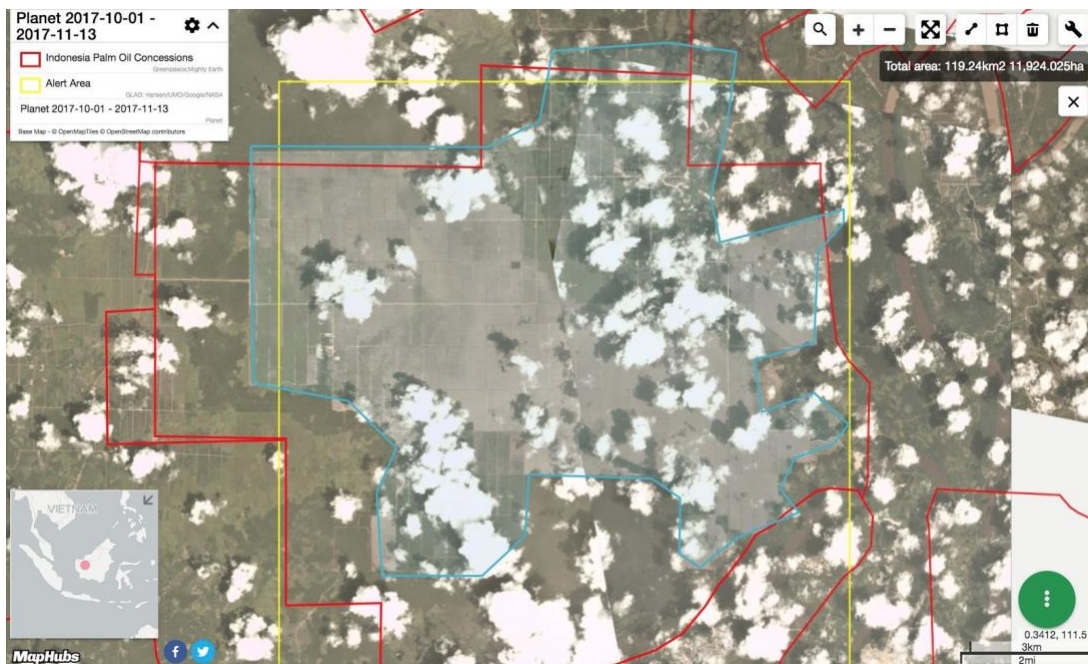
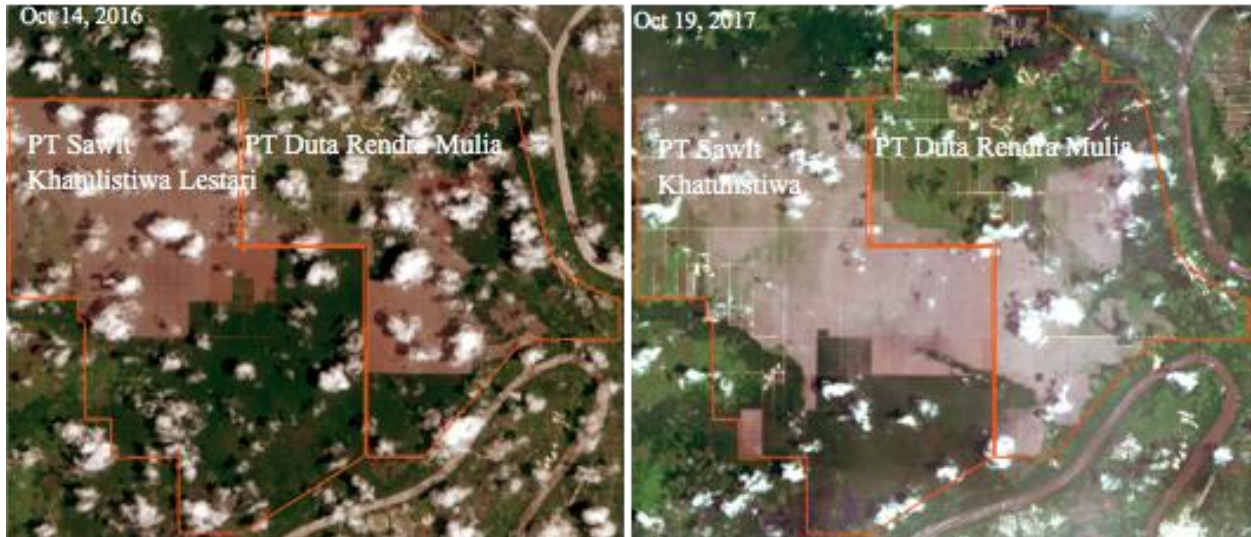
### Alert Overview





<https://mighty.maphubs.com/map/share/Byru-JCHMM/>

## Alert Imagery





## Ownership Information

PT Duta Rendra Mulya is ultimately owned by Anthoni Salim (through PT Citra Kencana Kasita, PT Zamrud Indhapersada and PT Wahanamulia Wiranusa), Junus Sutiono and Watson Dharma (through PT Mulia Abadi Lestari).

PT Sawit Khatulistiwa Lestari is ultimately owned by Dedi Mulyadi (through PT Inovasi Cemerlang and PT Andhika Wahana Putra), Bambang Kentjono and Franciscus Xaverius Hermanto (through PT Rahmat Timur Cemerlang, PT Mega Inti Usaha, PT Adi Mulya, PT Unitama Adiusaha Shipping and PT Andhika Wahana Putra).

PT Adi Mulya also has 5.9% shares in PT Duta Rendra Mulya.

Identity	Ownership	Position
Yunus Wibowo	-	Director
Gunawan Sumantri	-	President Director
Drs. Purnawidjaja Dana	-	Commissioner

---

## Supply Chain Information

Not Available